

Lafcadio Hearn's connection to Tramore

As a young child, Patrick Lafcadio Hearn was entrusted to the care of his father's aunt, Sarah Brenane. From the mid 1850s, Patrick spent much of his childhood summers in Tramore with Mrs. Brenane, who regularly visited her friend Elizabeth Hearn Molyneux, who resided there. Sarah Brenane retired to Tramore in 1867 and was buried there in 1871.

The very last time Patrick saw his father was on the beach in Tramore, when he was seven years old. The young Patrick learned to swim in Tramore and passed many happy hours listening to fishermen's stories of storms and shipwrecks.

Lafcadio Hearn is remembered in the poem "A Shrine to Lafcadio Hearn 1850-1904" by Waterford Poet Sean Dunne. (Full poem can be found on our website: www.lafcadiohearngardens.com)

*"In the sound of sandals on a bridge
I hear him sometimes, or catch him
in the swift calligraphy of a scroll,
or in the curve of a rough bowl."*



GARDENS OPEN: 11.00am - 5.00pm

Thursday to Sunday (April-May)

Tuesday to Sunday (June-October)-Thursdays (All Year Round)

Entry: €5. Children: U-12 FREE. Guided Tour (45mins): €7.50

Loyalty Card: €25 (10 visits)

Opening days may vary from season to season. (Open Bank Holiday Mondays)



GROUP GUIDED TOURS CATERED FOR BY APPOINTMENT

BOOKING AVAILABLE ONLINE

PLEASE CHECK WEBSITE FOR GARDEN EVENTS

GARDENS AVAILABLE FOR WEDDING PHOTOGRAPHY

**THIS IS A COMMUNITY RUN VOLUNTARY PROJECT
ALL PROCEEDS GO TOWARDS THE MAINTENANCE AND FURTHER
DEVELOPMENT OF THE GARDENS**

Become a Friend of the Gardens (€50) which includes:
Friendship Certificate, Annual Entry Pass for two
and Invitation to all Special Events



LAFCADIO HEARN JAPANESE GARDENS

ラフカディオ・ハーン庭園

IRELAND'S BRIDGE TO JAPAN

Tramore, County Waterford, Ireland



www.lafcadiohearngardens.com

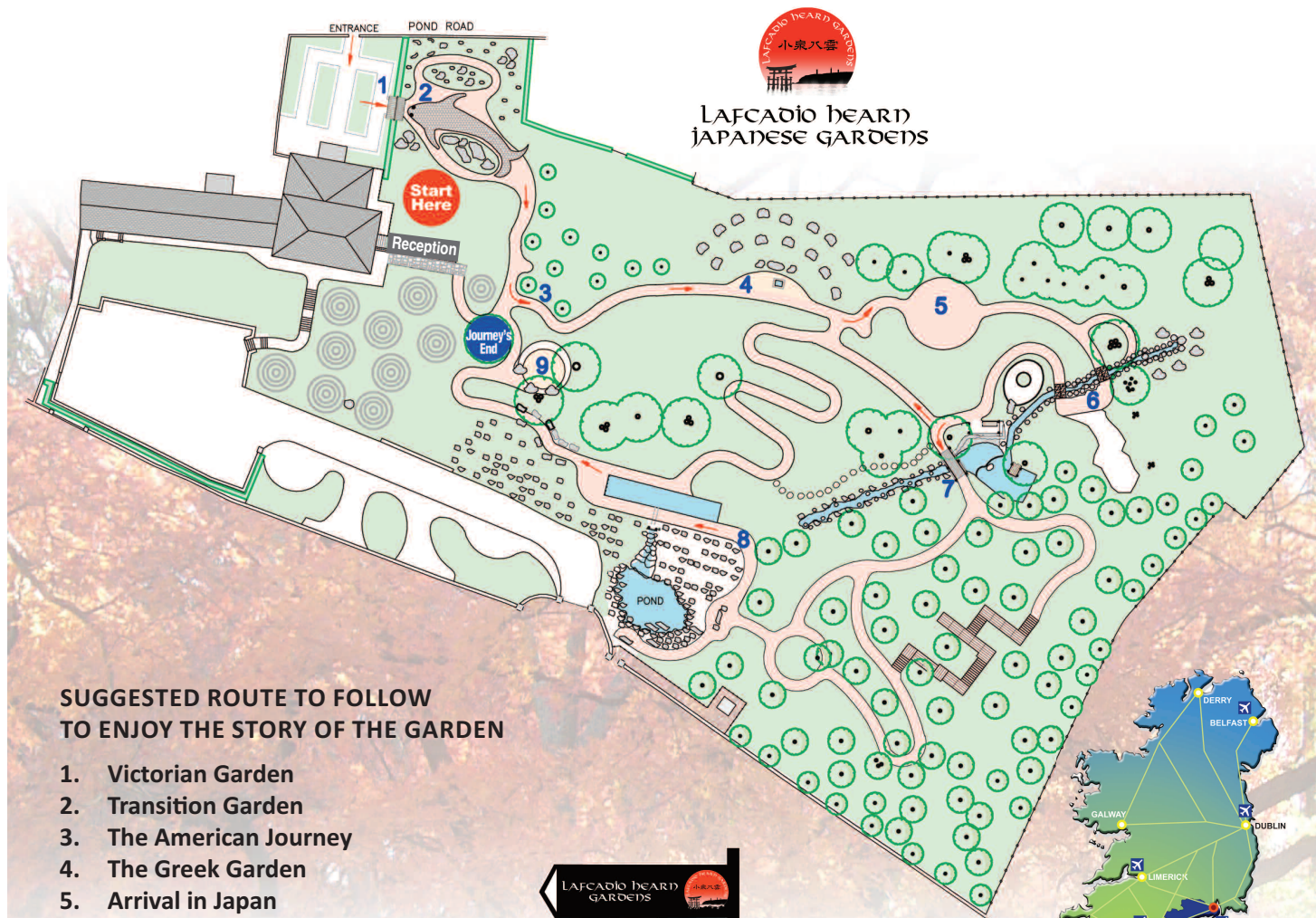
www.lafcadiohearngardens.com



LAFCADIO HEARN
Koizumi Yakumo

The Lafcadio Hearn Japanese Gardens reflect the life and extensive wanderings of Patrick Lafcadio Hearn, who grew up in Ireland, and whose life journey embraced several parts of the world. The gardens pay homage to the fame he attained in Japan through his incomparable literary descriptions of the people, customs and culture of that country.

The Lafcadio Hearn Japanese Gardens have a wonderful and unique story to tell. In their style and planting they contain elements of the gardening traditions of the countries and cultures traversed by Hearn during his varied life. The journey begins in a Victorian Garden to commemorate Hearn's happy childhood summers in Tramore. There is an American Garden, a Greek Garden and a traditional Japanese Tea Garden, in addition to a Stream Garden, ponds, a waterfall and an extensive woodland area. The main elements of design, in particular the use of rocks and water and the plant selection, are influenced by the tradition of a Japanese Strolling Garden.



Gardens 1-6 Wheelchair Accessible
Tea/Coffee and Toilet Facilities available.

