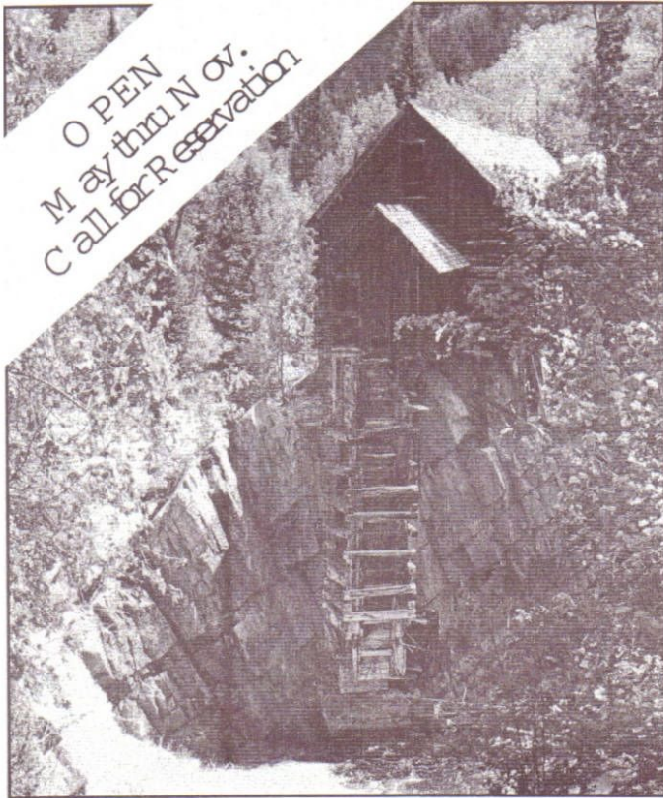


JEEP TOURS



OPEN
May thru Nov.
Call for Reservation

Crystal River Jeep Tours™

*"Every curve you go around
is a new picture postcard."*

~comment from a happy customer.

(970) 963-1991

Marble, Colorado

PUC ORC-00214

"Crystal River Jeep Tours is an equal opportunity service provider and employer and operates under special use permit from the USDA Forest Service, White River National Forest."

CRYSTAL MILL TOURS

The Crystal Mill is among the most photographed historic sites in the USA. To get there your Jeep will traverse the mountain roads blazed by settlers in the late 1800's. See Lizard Lake, shelf roads, water falls, wildlife, towering 2000 foot cliffs and the unmatched beauty of the Upper Crystal River Valley. *Prices subject to change.*

Crystal (3 hours)

\$125.00 per person (1 passenger)

\$90.00 per person (2 passengers)

\$60.00 per person (3 or more passengers)

This tour takes you to the historic Crystal Mill and Crystal City, 20 minute stops at each site. Departure: 10:00 and 2:00 daily.

Lead King Basin Loop (5 hours)

\$150.00 per person (1 passenger)

\$100.00 per person (2 passengers)

\$80.00 per person (3 or more passengers)

This alpine tour includes incredible flower covered alpine meadows, panoramic views of the valley and peaks, Coors Falls, Crystal City, and the historic Crystal Mill. Brown bag lunch recommended. Departure: 10:00 daily.

Smittys Special (7 hours)

\$190.00 per person (1-2 passengers)

\$175.00 per person (3 passengers or more)

The Lead King Basin Loop on steroids. We add a trip to Devils Punchbowls and a short hike to Patricia Falls. Brown bag lunch recommended. Departure: 10:00 daily.

OTHER TOUR OPTIONS

Marble City Tour (2.5 hours)

\$25.00 per person (1 passenger minimum)

See the historical sites of Marble. Includes views from the Quarry Road and Old Ski Area Road. Departure: 10:00 and 2:00 daily.

Other Services

ADDITIONAL TIME: \$25.00 per hour per person.

DROP-OFF/PICK-UP: Transport for photographers, hikers, and outdoors people. Call for confirmation and rates.

FLY FISHING: In coordination with Outwest Guides.

CHILDREN: Under 10 are 1/2 rate, 5 and under free.

PETS: Sorry, no pets allowed. We may have a pet sitter available.

Groups up to 15 with prior notice. Our guides are experienced mountain drivers, First Aid / CPR qualified, and are knowledgeable of the history, flora and fauna of the area. Tips are encouraged.

Drop-ins are welcome. Reservations are recommended

For further information see our web site at:

<http://www.smithfamilycolorado.com/CRJT>

updated July 2016