



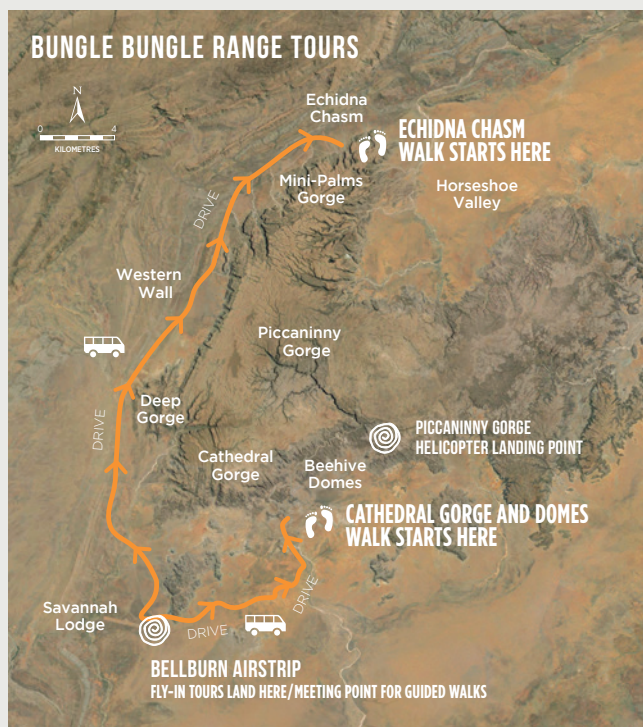
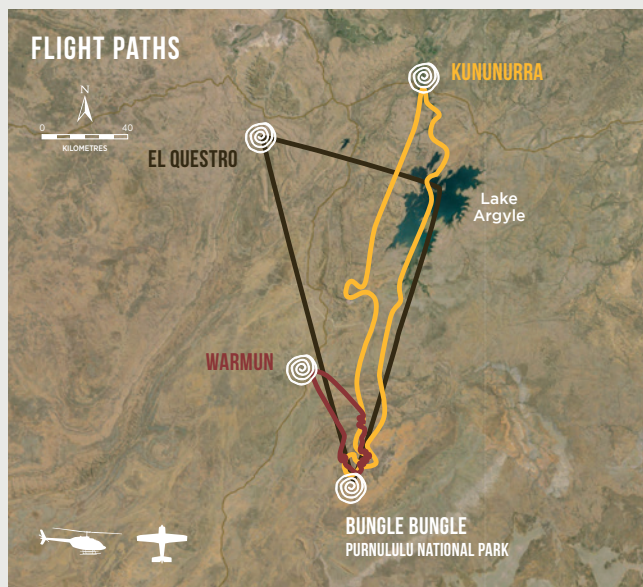
BOOKINGS 1800 899 029

BUNGLEBUNGLEGUIDEDTOURS.COM.AU | BBGT.COM.AU

BUNGLE BUNGLE GUIDED TOURS

Bungle Bungle Guided Tours offer a unique experience, providing guided walking tours with an Aboriginal perspective of the world heritage listed Purnululu National Park. One of only 12 UNESCO Natural World Heritage sites in Australia, Purnululu National Park covers almost 240,000 hectares of remote wilderness and includes the Bungle Bungle Range, a spectacular landscape of sculptured rocks and sandstone towers. Your local guide will take you back to a time where the Aboriginal people lived here for some 40,000 years. Learn about bush-tucker, Aboriginal customs and the many reasons why Purnululu is World Heritage listed. Immerse yourself in the spirit of this ancient place.

You can fly in to join our tours from most Kimberley towns. Walking tours depart from Bellburn Airstrip, Purnululu National Park.



CATHEDRAL GORGE AND DOMES GUIDED WALK

CODE BB1 | LEVEL 2 WALK, MODERATE TO EASY

Tours start from: Bellburn Airstrip, Purnululu National Park. Tour time: 10:15am to 3:15pm. Please meet 30 minutes prior to departure. Drive in to meet the tour or choose a scenic flight from Kununurra (plane or helicopter), or from Warmun (helicopter) to the Bungle Bungle.

Flying by plane from Kununurra is in air-conditioned comfort, with high wings offering spectacular panoramic views. By helicopter the views are close-up and you can land en-route to swim in waterholes. Fly over Lake Kununurra, the Ord Irrigation Area, Lake Argyle, the Carr Boyd and Osmand Ranges.

Flying in from Warmun via helicopter offers close-up views of the stunning Osmand Range and the famous orange and black striped sandstone domes in the Bungle Bungle.

In Purnululu National Park meet your guide at the HeliSpirit office for a short drive to the start of the walk. The Domes Walk will leave you filled with amazement as you walk amongst the famous eroded towers and black and orange banded beehive structures. Walk into Cathedral Gorge, where the towering cliffs open up to form a space with awe inspiring natural acoustics. Walk along the bed of Piccaninny Creek and learn about the Kimberley climate, the 6 seasons and unique flora and fauna so important to the traditional custodians of the land.

If you have flown in, finish your day tour with another memorable scenic flight back to Kununurra or Warmun.

A small cooler bag with your lunch is provided per couple, or per person if you are a solo traveller.

Pricing: Ground tour only: Adult \$199 | Child \$150

Tour pricing including scenic aeroplane transfers

Departure location	Adult	Child	Times
Kununurra	\$789 pp	\$769 pp	9:00am to 5:00pm
El Questro (min 4)	\$949 pp	\$899 pp	9:00am to 5:00pm

Tour pricing including scenic helicopter transfers

Departure location	Adult	Child	Times
Warmun	\$999 pp	\$950 pp	9:30am to 4:15pm
Kununurra (private tour)	\$2299 pp	\$2249 pp	8:00am to 5:00pm





CATHEDRAL GORGE, THE DOMES AND ECHIDNA CHASM WALKS

CODE BB3 | LEVEL 3 WALK, MODERATELY CHALLENGING

Tours start from: Bellburn Airstrip, Purnululu National Park. Tour time: 7:15am to 3:15pm. Please meet 30 minutes prior to departure. Drive in to meet the tour or choose a scenic flight from Kununurra (plane or helicopter), or from Warmun (helicopter) to the Bungle Bungle.

Flying by plane from Kununurra is in air-conditioned comfort, with high wings offering panoramic views. By helicopter the views are close-up and you can land en-route to swim in waterholes. Fly over Lake Kununurra, the Ord Irrigation Area, Lake Argyle, the Carr Boyd and Osmand Ranges. Flying in from Warmun via helicopter offers close-up views of the stunning Osmand Range and the famous orange and black striped sandstone domes in the Bungle Bungle.

In Purnululu National Park meet your guide at the HeliSpirit office for a short drive to the start of the walk. The Domes Walk will leave you filled with amazement as you walk amongst the famous eroded towers and black and orange banded beehive structures. Walk into Cathedral Gorge, where the towering cliffs open up to form a space with awe inspiring natural acoustics and along the bed of Piccaninny Creek. After lunch visit the northern gorges of Purnululu, which are quite different to Cathedral Gorge and the Domes. A 65 minute drive takes you northwards along the Western Wall of the Bungle Bungle Range. A rocky path leads your walk into Echidna Chasm, which narrows until it is just two shoulders width apart. Gazing skywards to the bright blue sky, the orange towering walls look as if they are lit from within. Livistona palm trees cling to the vertical sides.

A high level of mobility is required for this 1.5 hour afternoon walk as it includes climbing over boulders and walking up staircases to viewing platforms at the end of the chasm.

If you have flown in, finish your day tour with another memorable scenic flight back to Kununurra or Warmun.

A small cooler bag with your lunch is provided per couple, or per person if you are a solo traveller.

Pricing: Ground tour only: Adult \$299 | Child \$250

Tour pricing including scenic air transfers

Departure location	Adult	Child	Times
Kununurra by plane	\$1189 pp	\$1169 pp	6:00am to 5:00pm
Warmun by helicopter	\$1099 pp	\$1049 pp	6:45am to 4:00pm



OPTIONAL ADD-ONS OPTIONS CAN BE ADDED TO ANY OF OUR 3 TOURS

HELICOPTER FLIGHTS AND OVERNIGHT STAY

HELICOPTER FLIGHTS

For thrilling close-up aerial views with excellent photographic opportunities, a helicopter flight completes the overall Purnululu experience. You will see areas of the Bungle Bungle Range that aren't seen by plane or on the ground.

Pricing:

Tour	Duration	Flight	Cost
Tour A18	18 minutes	Domes Special Flight	\$289 pp
Tour A30	30 minutes	Original Bungle Bungle Helicopter Flight	\$399 pp
Tour A42	42 minutes	Bungle Bungle Long Look	\$499 pp

OVERNIGHT STAY

With exquisite starry skies above – why not stay the night at the Bungle Bungle Savannah Lodge!

Accommodation in a spacious safari cabin with ensuite bathroom, three-course buffet dinner and cooked breakfast starts from \$250 per person.

Departure in the morning on day 2 is after breakfast.

WHAT TO BRING

Camera (must have lanyard or wrist strap for optional helicopter flight), day-pack, sturdy walking/hiking shoes, hat, sunglasses, sunscreen, water bottle, light jacket for cool mornings/helicopter flights. Overnight bags must not exceed 10kg and must be soft-pack type.





PICCANINNY GORGE HELI-HIKE

CODE BB4 | LEVEL 5 WALK
— HIGH LEVEL OF FITNESS REQUIRED

Tours start from: Bellburn Airstrip, Purnululu National Park.
Tour time: 7:15am to 3:15pm. Please meet 30 minutes prior to departure.

Attention avid hikers! This is the tour for you. Piccaninny Gorge has only been explored by very few people as access is only by foot (3 day hike) or by helicopter on this tour. The untouched rugged gorge seems prehistoric and is spectacular.

You have the option of flying into Purnululu National Park by plane or helicopter from Kununurra, or by helicopter from Warmun. Alternatively, if you have driven into the park, meet your guide at the HeliSpirit shady area near the airstrip.

Meet your guide and then board a helicopter to fly over the Bungle Bungle to 'Y' Gorge before soaring across the top of the range to the mouth of spectacular Piccaninny Gorge where we land. This enormous gorge spreads into five "fingers" as it cuts through range. Your guide will lead the hike into the gorge and tell you about the area's cultural significance to the Aboriginal people and its unique history, which led to the World Heritage listing of Purnululu.

This hike has no designated track which means you and your guide are likely to be choosing your own track throughout the day. Finding new things on your hike is common, as the path you choose to walk will be one that only a few feet have trodden. The hike is up to 10km return and requires a high level of fitness and mobility. The rocky creek bed of Piccaninny Gorge is classed as a level 5 walk.

What to bring: Hiking day pack, camera, hiking boots, long pants and sleeves (light clothing), jacket, hat, sunscreen, sunglasses, gaiters, camelbak, hiking stick (optional), plus any other personal hiking gear you feel necessary.

Pricing: \$799 per person

Tour pricing including scenic **aeroplane** transfers

Departure location	Adult	Times
Kununurra	\$1579 pp	6:00am to 5:00pm

Tour pricing including scenic **helicopter** transfers

Departure location	Adult	Times
Warmun	\$1599 pp	6:30am to 4:00pm



TERMS AND CONDITIONS

Cancellation policy

With less than 24 hours notice of cancellation, the fare is NON-REFUNDABLE, 24 hours and up to 7 days a 20% administration fee will be charged per booking.

Travel insurance

We recommend that all customers take out travel insurance.

Validity of rates

Prices displayed are valid for 2017 unless stated otherwise.

Flight times and tour duration

All times are estimates.

Government and additional charges

Our tour prices are fully inclusive of all government, environmental and airport levies.

Maximum weight seat limits

R44 Helicopter: 136 kg.

Disabled passengers

We welcome customers with impaired mobility. We must be advised a minimum of 48 hours prior to scheduled time of departure with the level of assistance required. For health and safety reasons, we are not permitted to lift a passenger into or out of the aircraft or vehicles.

Minimum/maximum numbers

A minimum of two passengers or the equivalent cost is required to confirm a tour.

Commentary

All scenic flights include personalised commentary by the pilot. All tours and safety briefings are conducted in English.

Child age/infant policy

Infants are classified and 0-2 years and may travel free of charge, on their parent's lap. Please note that only one infant may travel per aircraft. Children classified as 3-12 years of age inclusive, must be accompanied by an adult on the flight. There are no age limits on the walk. No car seats are provided for children on the tour bus.

Helicopter flight cameras

Cameras and phones must have lanyards/wrist straps. iPads and Tablets are not permitted on board.

Passengers must be at the aircraft departure point 30 minutes prior to scheduled departure time.

Passengers for the walk must arrive 15 minutes prior to tour departure.

All care is taken but no liability is accepted for damage to personal items.



**BUNGLE BUNGLE
GUIDED TOURS**

BOOKINGS 1800 899 029

WWW.BUNGLEBUNGLEGUIDEDTOURS.COM.AU

BOOKINGS@BBGT.COM.AU