





AN INTRODUCTION TO CRAVEN HOUSE

Spacious apartments, luxuriously furnished

Our expert-designed luxury apartments, located in both Hampton Court and Claygate, Surrey, offer the ultimate in quality and elegance. Whether you're staying for a week, a month, or more, you can enjoy the benefits of a luxurious home-from-home.

The best of both worlds

Enjoy easy access into central London and the M25 as well as a relaxing home-from-home environment surrounded by historic attractions and sprawling parkland. It's a five-minute walk to mainline British Rail stations from our apartments at Craven House and Claygate. The train journey into London takes 20-25 minutes and the M25 is a five-minute drive.

What can we do for you?

We pride ourselves on our friendly, can-do service.

This starts with a welcome pack of essentials and it extends to a full concierge service for booking theatre tickets, taxis, restaurants or other requirements. We'll do everything we can to help.

Our immaculate collection

Our apartments are immaculately clean, tidy and well stocked at all times. Our weekly professional maid service ensures that all apartments are kept in order.

We value privacy and security

All Craven House and Claygate apartments have a private front door with secure entry system and alarm, as well as allocated off-street parking.

We look forward to welcoming you soon.

CRAVEN HOUSE: HAMPTON COURT

Craven House is a stunning Georgian building backing onto Bushy Park in Hampton Court. Built in 1720, Craven House has historical interest and is a major landmark locally. Craven House offers the very best in quality, elegance and friendly service.

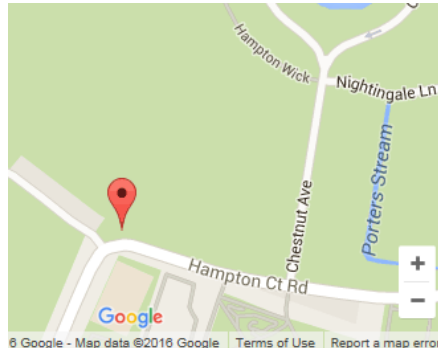
All of our apartments at Craven House, Hampton Court, have views over Bushy Park, so you can relax on the balconies and watch the deer stroll past. All apartments have a welcome manual which includes important information such as local restaurants, contact numbers etc.

We currently have five apartments:

1. Park Suite
2. Court Suite
3. Upper Garden Suite
4. Lower Garden Suite
5. The Studio

The bedroom and living areas contain integrated LG TV and DVD player.

All living rooms have 42-inch TV and all bedrooms have 32-inch TV, with the exception of the Lower Garden Suite, which has a 57-inch screen.



Craven House, Hampton Court, is a 5 minute walk from Hampton Court train station. It takes around 25 minutes to Waterloo. It's also a 3 mile drive to Esher and 10 miles to Richmond.



PARK SUITE

Our luxurious Park Suite has high, wood-beamed ceilings and a large balcony with stunning views over Bushy Park. Sleeps 4.

- Bedroom with 1 double bed
- Or 2 large single beds depending on requirements
- Living area with 2 sofa beds
- 1 bathroom with bath and shower
- Kitchen and roof terrace



PARK SUITE



PARK SUITE

The Park Suite has over 92.1m² of useable area. Furniture layout is subject to change.



COURT SUITE

The Court Suite is a spacious and handsome apartment with stunning uninterrupted views over Bushy Park. Sleeps 4.

- Bedroom with king-size bed
- Living area with 2 sofa beds
- Bathroom with shower
- Kitchen and dining area



COURT SUITE



COURT SUITE

The Court Suite has over 100m² of useable area. Furniture layout is subject to change.



UPPER GARDEN SUITE

A stunning apartment with over 80m² of living space and a balcony in every room to capture the beauty of Bushy Park. Sleeps 4.

- Beautiful kitchen / living room
- Huge master bedroom with an Emperor size Ralph Lauren bed
- En suite bathroom suite
- Separate toilet area and sofa bed to sleep a further 2 people
- Shared use of lovely courtyard garden

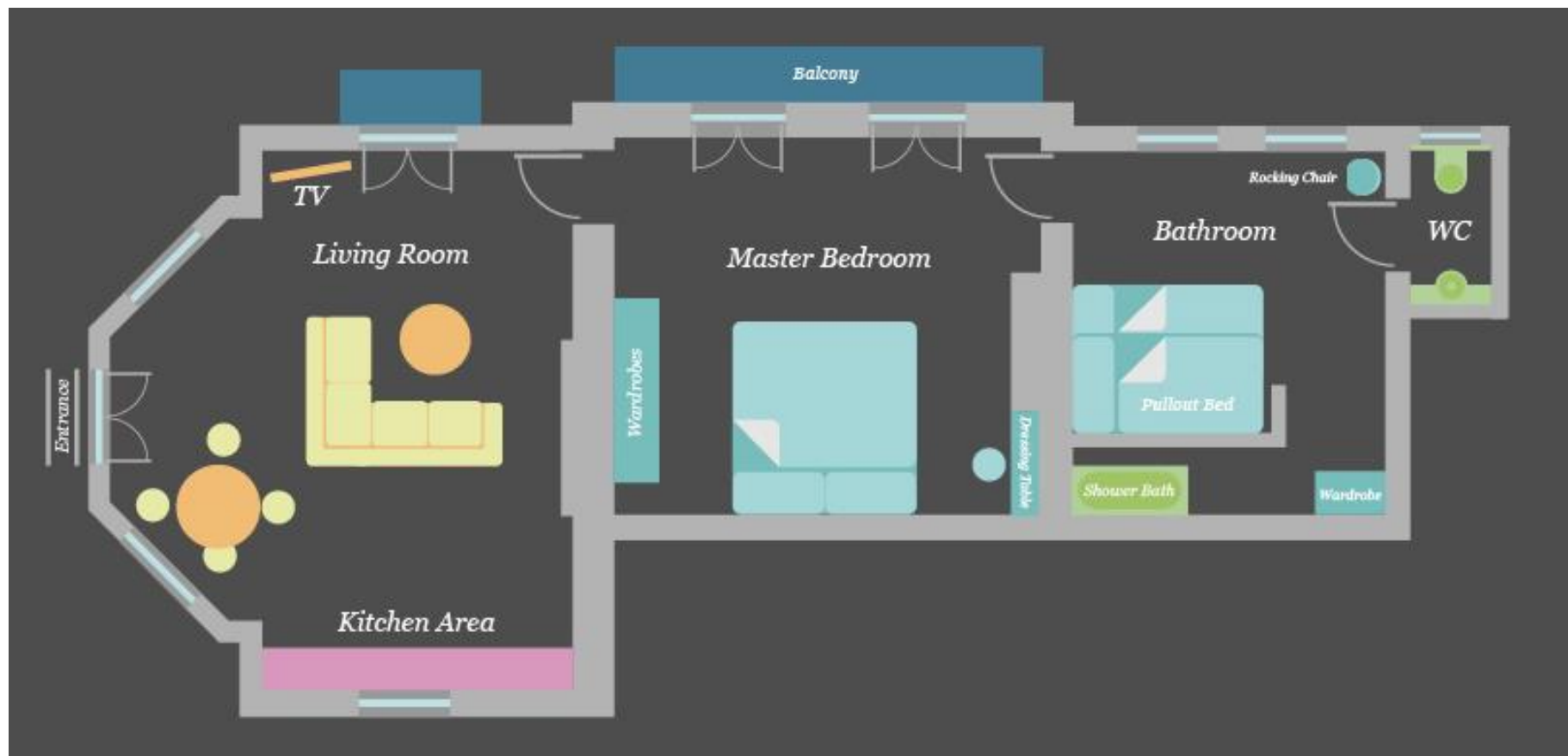


UPPER GARDEN SUITE



UPPER GARDEN SUITE

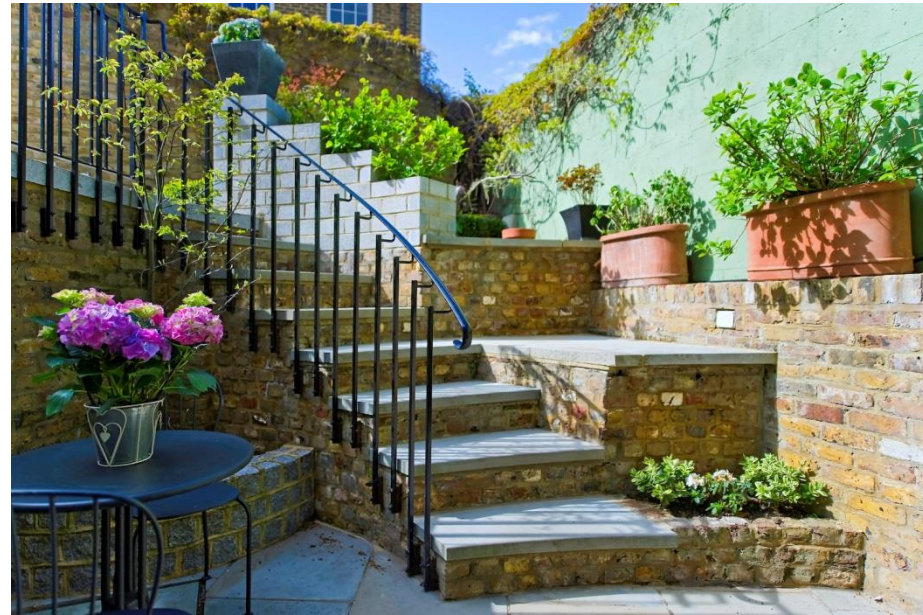
Our Upper Garden Suite has over 80m² of useable area. Furniture layout is subject to change.



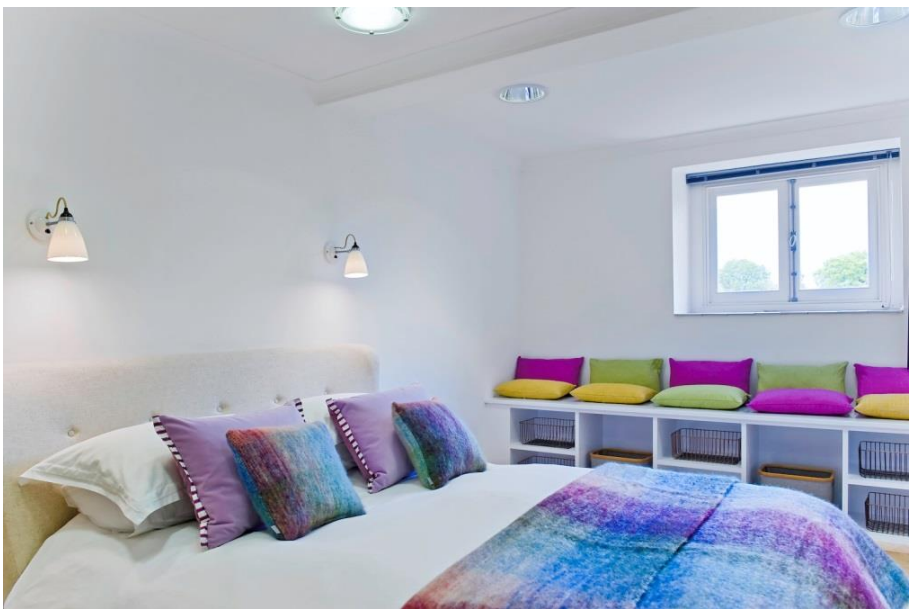
LOWER GARDEN SUITE

This bright, colourful and expertly designed apartment has two bedrooms. Sleeps 4.

- Ultra-modern kitchen
- Master bedroom (king size bed) with plenty of storage and a desk
- Large second bedroom with 2 single beds
- Beautiful shower/wet room
- Under-floor heating throughout
- Shared use of lovely courtyard garden
- Spectacular views over Bushy Park

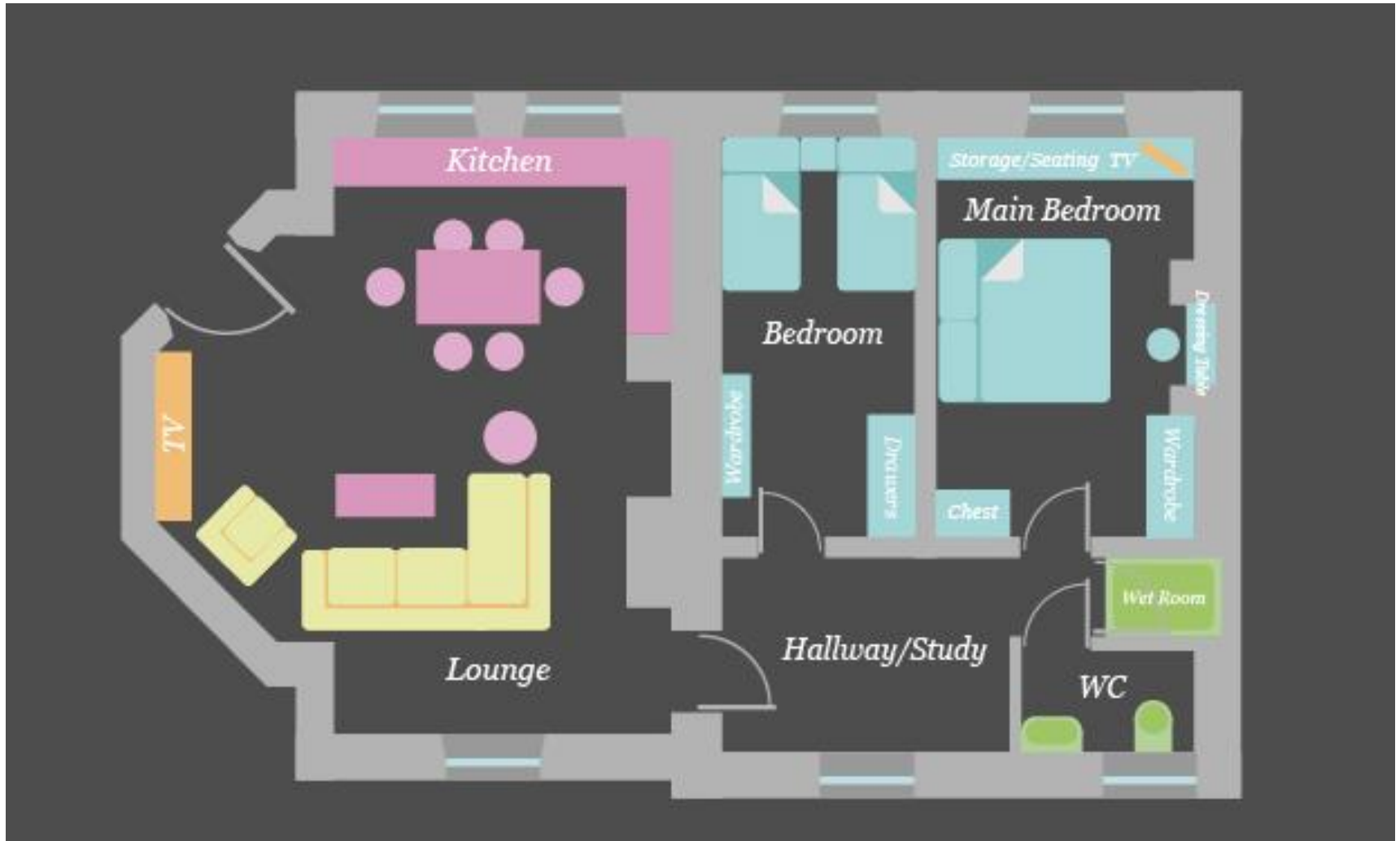


LOWER GARDEN SUITE



LOWER GARDEN SUITE

The Lower Garden Suite has over 80m² of useable area. Furniture layout is subject to change.



THE STUDIO

Our most compact apartment is a stylish and elegant place to spend your short or long stay.

- Lounge/bedroom with a double bed
- Shower/wet room



THE STUDIO

The Studio has over 34.4m² of useable area.
Furniture layout is subject to change.



CRAVEN HOUSE: CLAYGATE

All our luxury apartments are recently renovated, refurbished and equipped to the very highest standards.

We currently have 2 luxury apartments in the delightful village of Claygate:

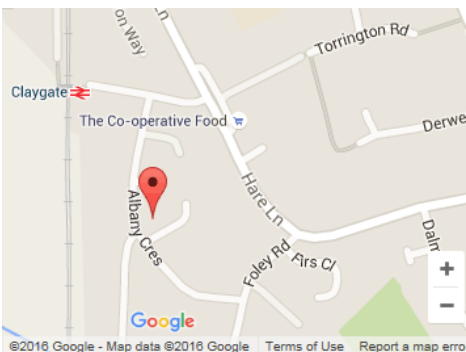
1. No.8 Springfield
2. No.8 The Terrace

The bedroom and living areas contain integrated LG TV and DVD player. All living rooms have 42-inch TV and all bedrooms have 32-inch TV.

There is off-street parking for two cars. It is also a 2 minute walk to the local shops, restaurants, beauticians and galleries.

Our Claygate apartments are perfect for holidays or temporary relocation.

Craven house, Claygate, is a 2 minute walk to Claygate train station, 30 minutes to Waterloo and 30 minutes to Guildford. Kingston is a 5 mile drive, Esher 2 miles and Cobham 4 miles.



No 8, SPRINGFIELD

A spacious three-bedroom ground-floor apartment with garden and parking in the charming village of Claygate. Sleeps 6.

- Master bedroom includes dressing area and en suite
- Large second bedroom includes zip-and-link twin beds
- Third bedroom includes zip-and-link beds and work station
- Modern kitchen
- Spacious living area with 48inch internet TV
- Beautiful, secure garden
- Family bathroom with walk-in shower
- Bathtub in the en suite



No 8, SPRINGFIELD



No 8, SPRINGFIELD

No 8, Springfield has over 125m² of useable area. Furniture layout is subject to change.



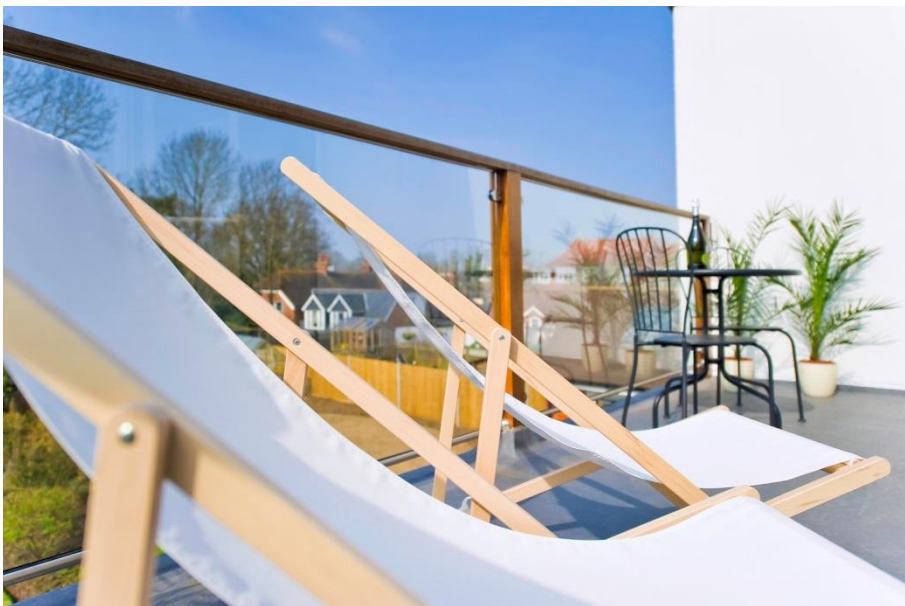
No 8, THE TERRACE

The Terrace is a wonderful, split-level luxury apartment. Sleeps 6.

- Located directly above our No.8 Springfield apartment
- Well-equipped kitchen and seating area
- Spacious dining room, airy lounge and beautiful terrace
- Huge master bedroom upstairs
- Great sized twin room, with third bedroom on lower level
- Family bathroom
- Off-street parking for two cars
- Private garden



No 8, THE TERRACE



No 8, THE TERRACE

No 8, The Terrace, has over 130m² of useable area. Furniture layout is subject to change.





CONTACT

Craven House

The Green
Hampton Court Road
Hampton Court
Surrey
KT8 9BX

No.8 Springfield &

No.8 The Terrace

No.8, Albany Crescent
Claygate
Surrey
KT10 0PF

Contact **Lucy** on

T: +44 (0) 20 8614 4460

M: +44 (0) 7747 073 269

E: info@cravenhouse.net

W: www.cravenhouse.net



[www.facebook.com/
Cravenhouseapartments](https://www.facebook.com/Cravenhouseapartments)



www.twitter.com/cravenhousehamp



CRAVEN HOUSE
LUXURY SERVICED APARTMENTS