

## AT A GLANCE

- Walk-through Red Squirrel experience
- Otter ponds & observation holt
- Scottish Wildcats ● Owl flying display
- Observation Badger sett ● Foxes
- Close-up viewing at the keeper talks
- Free parking ● Wheelchair accessible
- Coffee Shop ● Picnic areas ● Gift Shop
- Pip's Corner children's activity area



## PRICES

Adult: £12.00  
 Senior (age 65+): £10.50  
 Child (age 3-15): £8.50  
 Family (2 adults & 2 children): £37  
 Essential Carers: Free  
 Groups (15+) receive a 10% discount

## FIND OUT MORE

[www.britishwildlifecentre.co.uk](http://www.britishwildlifecentre.co.uk)

email: [info@britishwildlifecentre.co.uk](mailto:info@britishwildlifecentre.co.uk)

telephone: 01342 834658

Follow us on the Keeper's Blog,  
 Facebook, Instagram, Twitter & Flickr



## OPEN TIMES 2019

We open every weekend and public holiday of the year (excluding 24, 25, & 26 December) and daily during these school holiday periods:

Spring half term: Sat 16 Feb - Sun 24 Feb  
 Easter holiday: Sat 6 Apr - Mon 22 Apr  
 Summer half term: Sat 25 May - Sun 2 Jun  
 Summer holiday: Wed 24 Jul - Tue 3 Sep  
 Autumn half term: Sat 19 Oct - Sun 3 Nov  
 Christmas holiday: Fri 27 Dec - Sun 5 Jan

Open 10am - 5pm (Nov - Jan 10am - 4pm)  
 Last admissions 1 hour before closing

We close to the public on weekdays in school term time as we are available for pre-booked school trips, exclusive private tours and photography days.

## FIND US

We're on the A22, near Lingfield, just 10 minutes from the M25 (Jcn 6 / Godstone).  
 Eastbourne Road (A22), Newchapel,  
 Lingfield, Surrey RH7 6LF tel: 01342 834658  
 email: [info@britishwildlifecentre.co.uk](mailto:info@britishwildlifecentre.co.uk)  
[www.britishwildlifecentre.co.uk](http://www.britishwildlifecentre.co.uk)



# British Wildlife Centre

Home to the finest collection of native wildlife in Britain, from tiny harvest mice to magnificent red deer



Over 40 different species!

Pine marten

British Wildlife Centre



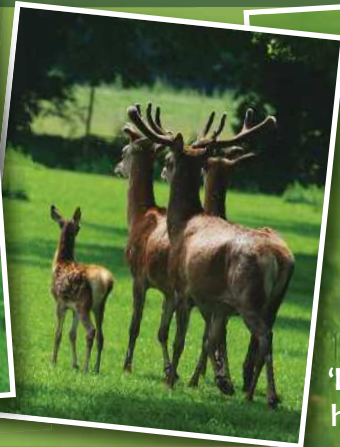
On the A22 nr Lingfield, Surrey RH7 6LF  
[www.britishwildlifecentre.co.uk](http://www.britishwildlifecentre.co.uk)



## DISCOVER BRITAIN'S WONDERFUL WILDLIFE

In the heart of the East Surrey countryside, the British Wildlife Centre is home to the UK's finest collection of native species, many rarely seen in the wild. Our animals live in large enclosures, landscaped to reflect their natural habitats.

Here you can visit Britain's first walk-through red squirrel enclosure and stroll among free-ranging red squirrels in their own copse.



'It's a REAL natural history experience!'

- Walk among Red Squirrels
- Observation Otter holt
- Pine Martens & Polecats
- Observation Badger sett
- Fox families • Deer park
- Scottish Wildcats • Ravens
- Owl flying display
- Night creatures in the Nocturnal House
- Animals of the Barn and Hedgerow
- Wetland nature reserve boardwalk
- Fantastic photo opportunities



## EXCLUSIVE VISITS

On weekdays in school term time we host pre-booked keeper-led school trips, private tours when you can enjoy the Centre to yourselves, and photography events which offer unrivalled photo opportunities with special access to our wonderful wildlife. We also offer venue facilities for professional photography and filming.



## MEET THE ANIMALS...

... at our popular keeper talks. They are a great way to get the most from your visit and bring you closer to the wildlife that is all around us but is seldom seen. Talks take place throughout the day, giving you the chance to learn more about native animals and the challenges they face in the wild.



## WE OFFER...

- Free parking
- Wheelchair access
- Wildlife Gift Shop
- Coffee Shop
- Picnic areas
- Coach parking
- Membership
- Animal adoption
- Half-hourly keeper talks
- Pip's Corner activity area for your young cubs and kittens! (high season only)



## CONSERVING WILDLIFE

By visiting us you are helping to fund our vital conservation projects and breeding programmes to save Britain's most vulnerable species, such as red squirrels, water voles and Scottish wildcats. Complementary to the main Centre, our 26 acre wetland nature reserve provides valuable habitat for a huge variety of wild species that make it their home.

