

CAPE ANN MUSEUM

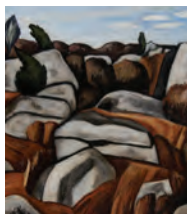
ART HISTORY CULTURE

EXPLORE & DISCOVER

The background image is a reproduction of a painting by Fitz Henry Lane, titled 'View of Gloucester from Rocky Neck [detail], 1844'. It depicts a harbor scene with several sailboats on the water. In the foreground, two people are sitting on rocks, looking out at the harbor. A dog is also visible on the rocks. The town of Gloucester is visible in the background, with its characteristic architecture and a prominent church steeple. The sky is filled with soft, white clouds.

Fitz Henry Lane (1804–1865), *View of Gloucester from Rocky Neck* [detail], 1844.
Oil on canvas. Cape Ann Museum, gift of Mrs. Jane Parker Stacy, 1948 [1289.1a].

The Cape Ann Museum's collections celebrate the story of Cape Ann—its people, its industries, and especially its arts and culture.



FINE ART The fine art collection includes the largest grouping of works by native son and renowned marine artist **Fitz Henry Lane**, as well as work by prominent painters and sculptors who lived on, visited or were inspired by Cape Ann including **John Sloan, Milton Avery, Marsden Hartley, Cecilia Beaux** and **Paul Manship**.



FOLLY COVE DESIGNERS A revolving display of textiles by the Folly Cove Designers, a guild of textile designer/artisans active from 1938 to 1968.



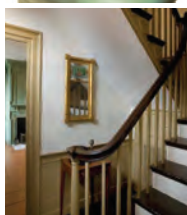
FISHING, TRADE & GRANITE The Fisheries & Maritime Galleries feature tools, models, three full-size vessels and a 15-foot tall first-order Fresnel lighthouse lens. The Granite Gallery displays tools, artifacts, historic photographs and fine art relating to Cape Ann's granite industry.



LIBRARY & ARCHIVES For researchers and the general public, this valuable resource houses books, maps, photographs, documents and primary source materials related to Cape Ann. Please call for hours.

HISTORIC PROPERTIES The Museum operates two historic properties, the White-Ellery House (1710) and the Captain Elias Davis House (1804) open on specific days or by appointment.

EXHIBITIONS & PROGRAMS Special exhibitions and related programs are offered throughout the year. For the most up-to-date information on current exhibitions and a full calendar of events, visit capeannmuseum.org.



- Hours:** Tuesday – Saturday, 10am to 5pm
Sunday, 1pm to 4pm
(closed Mondays and major holidays)
- Tours:** Tuesday – Saturday at 11am
Saturday & Sunday at 2pm
- Admission:** \$10 adults; \$8 Cape Ann residents, seniors, and students; Free for CAM members and youth 18 and under

CAPE ANN MUSEUM

27 Pleasant Street, Gloucester, MA

(978) 283-0455 | capeannmuseum.org



massculturalcouncil.org