



\*Permits required - available from the visitor centre. Call or visit us before you ride

from the Visitor Centre.

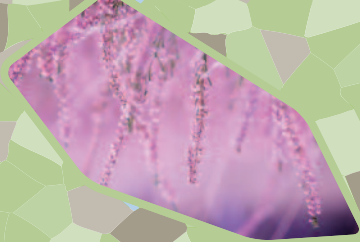
The Greensand Trust runs a number of events throughout the year for adults and children. For further details about our events programme please visit [www.greensandtrust.org](http://www.greensandtrust.org)

We have created play spots across the site so get your boots on and look out for the hedgehog carvings. Have a go at balancing, climbing, hiding, exploring, listening and looking!

- Enjoy the view of the heronry from the 'Heron's View Visitor Centre', where at our 'Treetops Cafe' you will find fresh, quality, locally sourced refreshments.
- Take a walk and explore the trails through the woodland, heathland and grassland
- Dogs are welcome – please pick up the "Dog Walking in Rushmere" leaflet from the Visitor Centre
- Bring your bike and use the family cycling route
- For a bigger challenge ride the trails\*
- Horse riders can access the site along the public bridleway from Brickhill and use the permissive horse routes\*



## Things to do

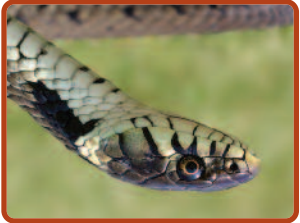


## Wildlife



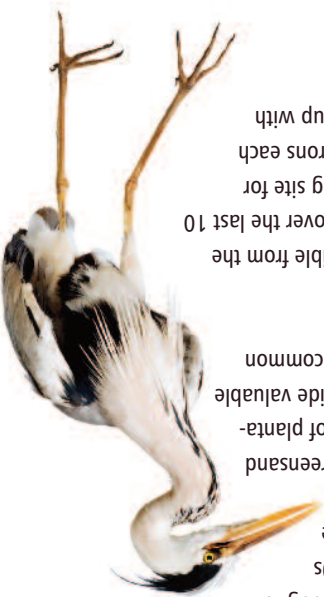
Rushmere is home to a variety of wildlife and habitats.

There are acres of woodland some of which is semi-natural broadleaved woodland with some fantastic ancient trees.



Much of the area used to be heathland and was traditionally managed by a combination of sheep grazing and cutting of gorse and heather for fuel. Sand was also dug for local building purposes. In the 1940s commercial conifer plantations were planted on most of the heathland in the former Rushmere Park. The Greensand Trust is restoring some of the areas of plantation woodland to heathland to provide valuable habitats for species such as adders, common lizards, tree pipits and woodlarks.

We believe the heronry which is visible from the Visitor Centre has been established over the last 10 years and provides a secure breeding site for approximately 8-10 pairs of grey herons each year. It can now be viewed in close-up with binoculars and our state of the art remote cameras.



Some of the paths are suitable for wheelchair users. These are shown on the map as 'access for all'. Please be aware that the majority of routes are not hard-surfaced, and are sandy with steep slopes in places.

There is designated disabled parking in both car parks and a wheelchair is available to borrow from the Stockgrove Visitor Centre – please book.



If you plan to visit more regularly why not take advantage of our annual car park pass. For only £30 you get unlimited access to both car parks throughout the year giving you huge savings! If you choose to gift aid your parking pass with a £5 donation the Park will benefit even further.

While the car park is open all year round, opening times vary on a seasonal basis. Please check current times on the signage by the entrance or by visiting [www.greensandtrust.org](http://www.greensandtrust.org)

There are public toilets and a cafe serving refreshments and selling firewood, handmade gifts, wildlife prints and charity cards to raise funds for the site.

400 acres of woodland, heathland and meadows for all to enjoy



Welcome to  
**RUSHMERE**  
Country Park



Stefanie Satchell

## Supporting Rushmere Country Park

Rushmere Country Park is managed by the Greensand Trust on a not for profit basis for the benefit of people and wildlife, for today, tomorrow and the future. We rely on your support to continue our vital work.

If you've enjoyed your visit and would like to make a donation to support the Park please pick up a donations envelope or use our donation box located in the visitor centre, or go to: [www.greensandtrust.org/donation](http://www.greensandtrust.org/donation)

The Greensand Trust is your local environmental charity. If you would like to learn more about our work, volunteer with us, make a donation or leave a gift in your will, contact us via:

The Working Woodland Centre  
Maulden Wood  
Nr Haynes West End  
Bedfordshire, MK453QT  
Tel 01234 743666  
email: [info@greensandtrust.org](mailto:info@greensandtrust.org)  
[www.greensandtrust.org](http://www.greensandtrust.org)

 **The Greensand Trust**

Registered charity no: 1077055

Rushmere Country Park has been made available for visitors through The Greensand Trust and Central Bedfordshire Council working in partnership for the benefit of both people and wildlife.

**Rushmere Country Park,**  
Heron View Visitor Centre, Linslade Road, Heath & Reach,  
Bedfordshire LU7 0EB  
Tel: 01525 234260  
email: [info@greensandtrust.org](mailto:info@greensandtrust.org)  
[www.greensandtrust.org](http://www.greensandtrust.org)



**Central Bedfordshire Council**

## Get involved

The Greensand Trust, an independent environmental charity, manages Rushmere Country Park and with the help of our volunteers is committed to conserving and caring for the environment whilst providing recreational opportunities for people.

There are many ways you can get involved:

- Practical conservation work
- Site wardening
- Office work / administration
- Guided walks / education work
- Events
- Volunteer ranger assistant
- Café & Retail
- Visitor Centre Welcome Desk

Please contact us to discuss current opportunities  
Tel: 01525 234260  
[www.greensandtrust.org](http://www.greensandtrust.org)

This leaflet has been printed on recycled paper, once you have finished with it please pass it onto someone else or recycle it.



 **The Greensand Trust**

Registered charity no: 1077055



400 acres of woodland, heathland and meadows for all to enjoy.

# Welcome to RUSHMERE Country Park



GREAT BRICKHILL  
0.2 MILES



- No open fires and no camping please!
- BBQs are allowed in the picnic area if raised off the ground (not on picnic tables).
- Please take all of your rubbish home with you.
- General waste bins are not provided.
- Dog waste bins are provided; bagged dog waste only.



2 Heronry

Oak Wood



5 Sundial



4 Stockgrove Visitor Centre



3 Nature discovery area



6 Boathouse



7 Giant Seat

HEATH & REACH  
0.5 MILES



1 The Herons View Visitor Centre and Restaurant



Picnic Area

1

Heron Valley

Conservation Area  
NO ACCESS

Shire Oak Heath

Lords Hill

Nightjar Valley

Conservation Area  
NO ACCESS

Lower Meadow

NO ACCESS

Main Entrance

In case of an emergency call the emergency services on 112 and then contact the ranger office on 01525 234260 or 01525 237760 for assistance.

## Map Key

- Woodpecker Trail
- Access for all footpath
- Footpath
- Bridleway
- Play spot
- Refreshments
- Vehicle Entrance
- Toilets
- Carpark
- Viewpoint
- Driveway (vehicle entrance)

The Woodpecker Trail is a circular walk of around an hour to the Stockgrove Lake and Visitor Centre and back. Follow the pink-topped wooden posts.

Visitors please be aware of other users, including cyclists and horse riders on shared routes and crossing points.

Please note other maps are available for cycling or horse riding permit holders



The Greensand Trust

Registered charity no: 1077055