



## How to get here

From Stromness: When departing the ferry in Stromness turn right upon departure from the ferry parking lot onto the A965 taking you towards Kirkwall. Take the 3rd left off the traffic circle and take a right at the end of the road. Turn right at A964 signposted to Orphir. Continue for approximately 7 miles (11 kms) past Houton ferry terminal and Westrow Lodge is further on the road to the left with a signpost. If using GPS use postcode: KW17 2RD

From Kirkwall: When departing the ferry in Kirkwall turn left upon departure from the ferry parking lot and head through industrial park (taking you towards Kirkwall) to junction, take left and then 2nd left off traffic circle at Mills Filling Station and follow road to another traffic circle and take 2nd left. Take a right at the A964 Orphir road and stay on for about 20 minutes passing through small village of Orphir. Westrow Lodge is just about 2 miles further on the road from village on the right. If using GPS use postcode: KW17 2RD

From St. Margaret's Hope: When departing the ferry from St Margaret's Hope follow signs to Kirkwall. You will pass Highland Park Distillery on the right when entering Kirkwall, follow the road around and then take left at the A964 Orphir road (signposted) and stay on for about 20 minutes passing through small village of Orphir. Westrow Lodge is just about 2 miles further on the road from village on the right. If using GPS use postcode: KW17 2RD



## What is there to see and do?

The most common complaint we get from visitors is that there just isn't enough time to see everything in Orkney! We suggest before you visit that you log on to the local tourist information site:

**www: visitorkney.com** that is just chock full of information on what to see and do in Orkney. Alternatively you can phone the VisitOrkney tourist information centre in Orkney, phone: 01856 872856, for a full colour brochure for information on things to see and do, travel, where to stay, where to dine, and where to buy things made in Orkney.

Westrow Lodge is in a quiet spot with a countryside/ beach feel, yet it is only a short drive from the two major towns of Stromness and Kirkwall and the major tourism attractions of Skara Brae and Maes Howe—a big bonus for those looking for the best of both worlds during their holiday stay.

# WESTROW LODGE

Luxury Bed and Breakfast

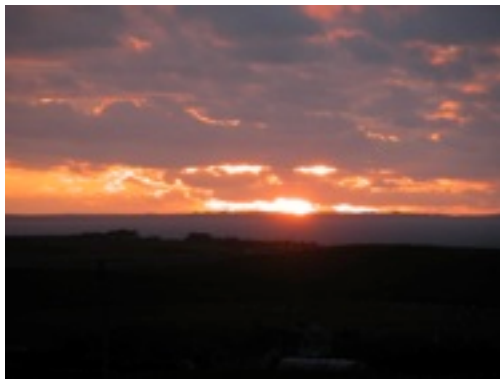


LuxuryTravelGuide  
GLOBAL AWARDS 2016  
- WINNER -

Kathy Bichan  
Westrow Lodge. Orphir.  
Orkney, Scotland. KW17 2RD  
Tel: 01856 811360  
email: [k2bichan@aol.com](mailto:k2bichan@aol.com)  
[www.rovingeye.co.uk](http://www.rovingeye.co.uk)



## TripAdvisor Latest Reviews



This attractive modern, purpose-built, Norwegian-style timber house is peacefully situated beside the A964, half-way between Kirkwall and Stromness, and enjoys glorious views over Scapa Flow and the surrounding countryside.

There are two spacious en-suite bedrooms on the first floor, both of which are comfortably furnished in pine to match the style of the house.

One bedroom is ensuite with a superking bed and has an adjoining small room with twin beds. Roomy bathroom with shower over jacuzzi bathtub with chromotherapy light. Television with Freeview, ironing board with iron, and trouser press are all in the room. Perfect for a small family that wants some privacy too!

The other bedroom is ensuite with a superking bed and an additional double bed. Roomy bathroom with shower over jacuzzi bathtub with chromotherapy light. Television with Freeview, ironing board with iron are all in the room. Laundry done for a minimal charge.

Additional cots, high chairs, booster seats etc. are available at no charge on advance request.

Guests have their own sitting room with small refrigerator and tea/coffee facilities. There is also a dedicated desk in the guest lounge with large screen apple computer and free Wifi access. Local information on hand.

Full traditional breakfast served or can cook to order.

Treat yourself to one of the best!

### **"The best B&B in Orkney" Reviewed 4 April 2016**

We have just spent 4 nights in Westrow Lodge and were sad to leave. Kathy and Keith made us very welcome and were fantastic hosts. The Lodge is in a perfect position to explore Orkney and is so lovely. Our room was so cosy and comfortable and the views from all aspects of Scapa Flow and the countryside are amazing. Kathy cooked us a lovely breakfast each morning and both Kathy and Keith gave us so much valuable information about things to do and see. The only place to stay when you are in Orkney!

### **"One of the best B&B we have ever stayed in!" Reviewed 1 April 2016**

We have just spent 2 nights in Westrow Lodge. Fabulous location and a beautiful B&B. Our hosts Kathy and Keith made us very welcome. Wonderful guest bedrooms and lounge area. Amazing views. Great breakfasts that kept us going all day. We would definitely stay at Westrow again if we return to Orkney.

### **"Fabulous stay with all you could need" Reviewed 30 September 2015**

Not only was Westrow Lodge in a great position halfway between Stromness and Kirkwall, Kathy did everything possible to ensure our stay was a comfortable one. The rooms were great and the breakfast fabulous. Thanks Kathy

### **"A perfect find!" Reviewed September 2015**

What an amazing B&B! From the moment we arrived and then left (reluctantly) after two nights, we felt very welcomed by Kathy who was keen to ensure that we had a wonderful stay. The B&B is perfectly situated for exploring Orkney by car - in particular, the history of Scapa Flow and the majesty of the Island of Hoy. The B&B is extremely well-appointed with modern facilities, including a jacuzzi in our bathroom (very welcome after a 10 mile walk on Hoy!). Our double king-sized bed was so comfortable that we asked Kathy where she got it from so that we can have one for ourselves! The breakfast was superb - very tasty and cooked with good quality ingredients that set us up for the day. When we come back to Orkney, we shall definitely return here.

### **"Fantastic B and B, with great rooms, location, and host" Reviewed September 2015**

Kathy was a great host for our family. The king suite/double twin room combo was perfect, with large rooms and bathroom. The B and B was extremely well-maintained with many recent updates. Kathy provided little extras that were very welcome - calling three restaurants to secure us a booking on a busy Friday night, letting us stay a little past our checkout time, etc. Great, made-to-order breakfast, as well.

## Tariffs

£44 per person per night based on two people sharing a room.  
Half price for children under 12. No smoking, no pets please.

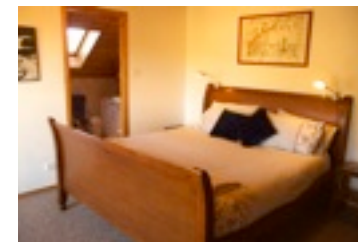
## The Accommodation



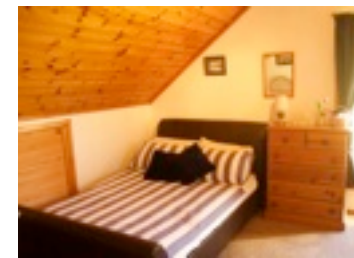
*Views of Scapa Flow from spacious guest lounge adjacent to bedrooms*



*Full cooked breakfast in picturesque owner's lounge*



*Super King size bed*



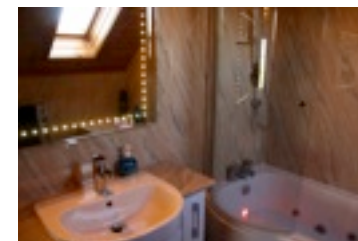
*Additional double bed in same room.*



*Super King size bed*



*Adjoining small twin room.*



*Roomy modern bathrooms with shower over jacuzzi tub with chromotherapy light.*

