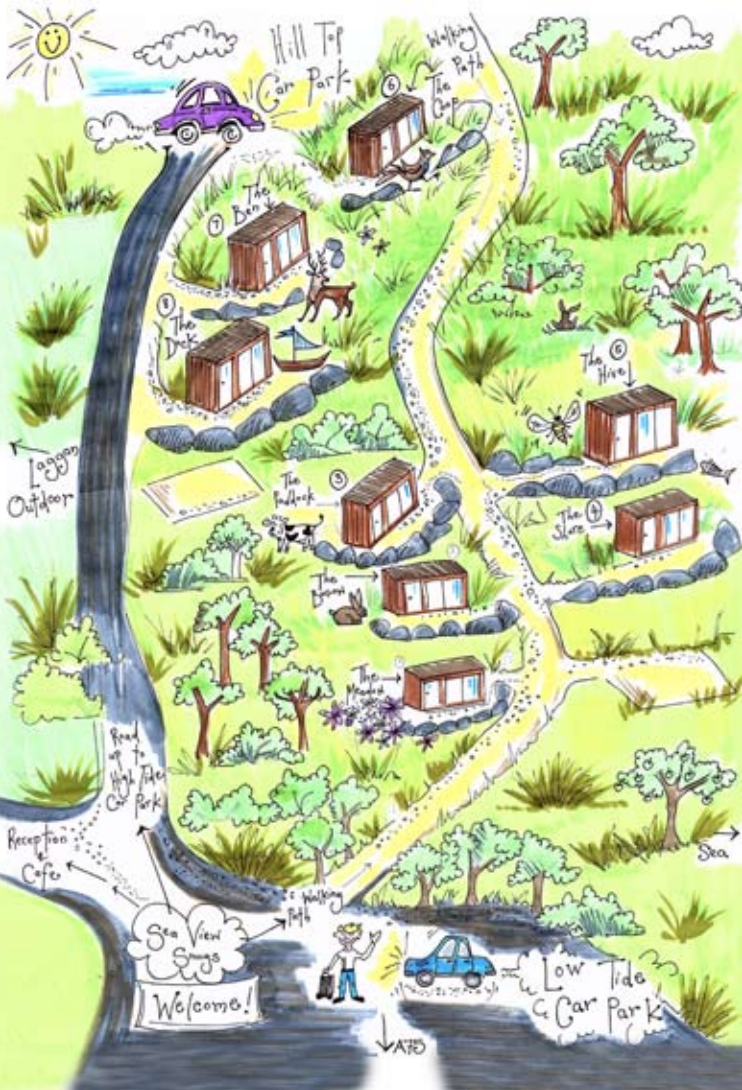


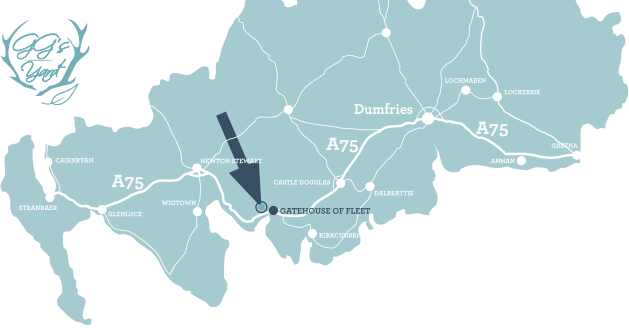
Sea View Snugs

"From the moment we arrived it felt like we had discovered a little bit of paradise."



www.ggsyard.co.uk

Find Us



"The views over the surrounding countryside and sea were stunning."

From the East: From Dumfries, take the A75 towards Stranraer. 4 miles after you have passed Gatehouse of Fleet you will pass a small fishing loch on your left hand side. Take the next right turn 500 yards after the loch and follow the brown Laggan Outdoor Activity Centre sign. Follow the road for 300 metres and as it bends to the left, turn right just before the cottage on the corner. Follow the signs to the car park and to reception.

From the West: From Stranraer, follow the A75 towards Dumfries. Continue past Newton Stewart for 14 miles and you will pass Auchenlarie Holiday Park on your right hand side. Continue for a further 0.7 miles and turn left at the brown Laggan Outdoor Activity Centre sign. Follow the road for 300 metres and as it bends to the left, turn right just before the cottage on the corner. Follow the signs to the car park and to reception.

Book online or call

T | 01557 840 206
E | hello@ggsyard.co.uk
W | www.ggsyard.co.uk

Sea View Snugs, Laggan, Gatehouse of Fleet, Dumfries & Galloway, DG7 2ES, Scotland.

f /ggsyard @ggsyard ggsyard

www.ggsyard.co.uk

Sea View Snugs

Luxury Accommodation in South West Scotland



Eight luxury Snugs, each individually themed & decorated, nestled in woodland with outstanding sea views.



T | 01557 840 206 E | hello@ggsyard.co.uk

www.ggsyard.co.uk

Our Sea View Snugs

Our luxury Sea View Snugs are the perfect base from which to explore Glorious Galloway, or to shut the world away and enjoy the relaxation and quiet they offer. Each Snug is set in natural woodland and offers incredible sea views.

Each Snug is individually themed and decorated with a modern country interior, each one with its own character, drawing from the nature and surroundings of the Snugs.

Our Snugs are fitted with the very best in interiors, from king size beds and bespoke upholstery in the sitting areas, to smart TV's and free Wi-Fi. Each snug has both an indoor sitting area in the master bedroom suite and an outdoor sitting area, affording incredible views over the countryside and Solway coast.

Each Snug has tea & coffee making facilities included and our Basecamp Café is on site offering breakfast and lunch for our guests.

Whether the weather is on our side and you get to make the most of the outdoor sitting area, or the Scottish weather lets us down and you snuggle in bed, cosy and warm, watching the Solway Coast outside, our Snugs are the perfect getaway.

The Area

Dumfries and Galloway is packed full of incredible scenery and beautiful landscapes, fascinating things to see and do, a diverse range of experiences and attractions and still manages to remain completely unspoilt.

From dark skies and deepest forest to music festivals and multi award winning attractions, it really has something to offer every visitor.

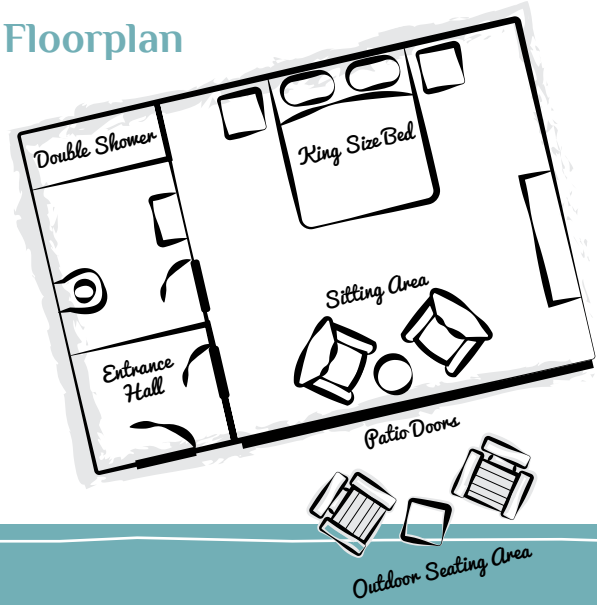
www.ggsyard.co.uk



Features include...

- Smart Televisions
- Kingsize Beds
- Incredible Sea Views
- Ensuite Shower Rooms
- Free Wifi
- On-site Café
- Relaxing Retreat
- Highest Quality Fixtures & Fittings

Floorplan



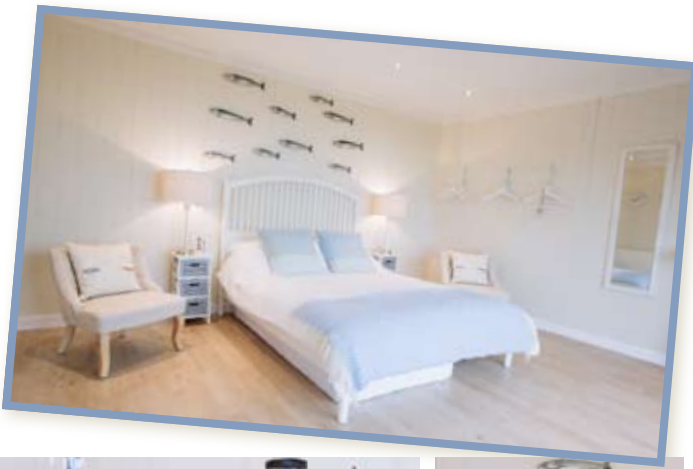
www.ggsyard.co.uk

We have eight individually themed and decorated Sea View Snugs.
All have the same layout and specification but each has its own character.

Sea View Snugs

The Shore

The Shore is in keeping with the coastal location of the Snugs and their incredible sea views. The Shore is largely white in its décor with accents of blue. A shoal of mackerel swims across the wall above the bed, whilst lighthouses and starfish are little touches that add to the coastal feel.



The Meadow

One of the most simple, but most stunning of our Snugs. Set against a white background, the pops of colour come from flowers and complementary artwork and soft furnishings; fresh, clean and perfectly suited to its natural surroundings.



The Coop

The Coop is dedicated to our feathery friends living in the hillsides behind the Snugs, the pheasant. With a neutral colour palette, a selection of complementary materials including copper, wood and stone, and bespoke soft furnishings, the overall effect is one of a relaxed and classic feel.



The Ben

Named after the hill which forms the backdrop to our Sea View Snugs, Ben John; the Ben combines a romantic theme with a twist of tartan. The walls are a neutral palate, allowing the accessories in red and tartan to stand out, as well as the striking stag artwork.



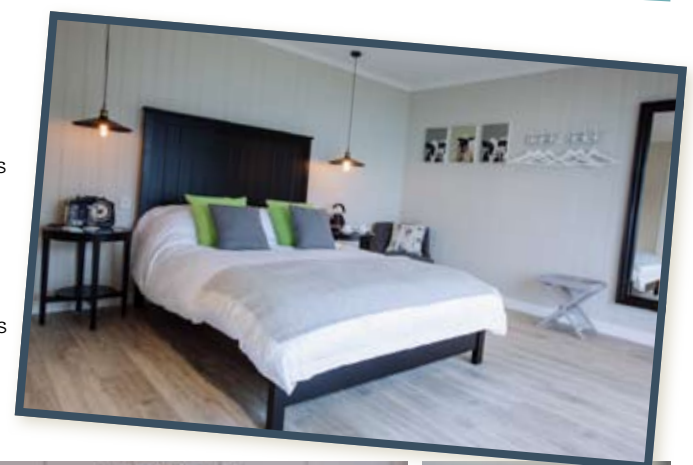
The Dock

The Dock makes reference to the proximity to the sea, which all our Snugs overlook. With a coastal theme throughout; from the blue and white colour scheme to the little touches; bunting, boats and birds. Lying in bed in The Dock, you can practically hear the waves lapping the shore.



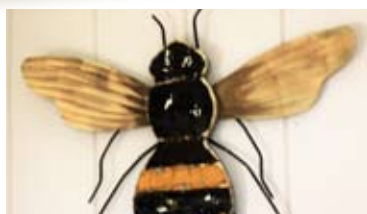
The Paddock

An ode to the cows and sheep that live in the fields and hillsides surrounding the Snugs, The Paddock is the perfect balance of masculine and feminine. The paddock has a monochromatic theme that is highlighted by pops of colour and complemented by bespoke soft furnishings in keeping with the theme.



The Hive

Our bee themed Snug, the Hive, is a combination of the subtle walls and background, with striking furnishings and features in a yellow colour, in keeping with the bee theme. With some classic tartan and quirky bee's the Hive is a stunning Snug.



The Burrow

Our bunny themed Snug, the Burrow, has neutral and natural tones, in keeping with the surroundings of our Snugs. Soft linens in neutral tartans, with accents of copper and wood complement the soft colour palate.

