

Gwithian Beach Houses

@ Gwithian Sands, Upton Towans, Gwithian, Hayle, Cornwall

Thank you for your enquiry.

The enclosed pages provide details of the chalets, the pricing, terms and conditions and a booking form.

If you wish to make a booking please call and reserve your dates, as they do tend to go very fast, and then complete the booking form and return to me with your deposit (electronically if possible).

We ourselves holiday in Gwithian each year and our family have been coming to this stunning place, through the generations for over 60 years.

We love it here and hope you will do too.

Yours Sincerely,

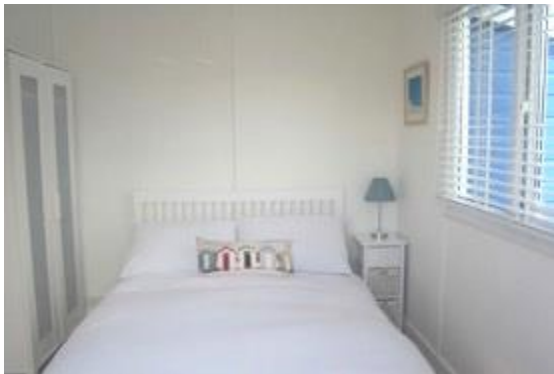
Katy & Rick Marshall

Gwithian Beach Houses

@ Gwithian Sands, Upton Towans, Gwithian, Hayle, Cornwall

Accommodation

Blue Ocean:



Our holiday homes are traditional Cornish two bedroom chalets. Our chalets have been fully refurbished to a high standard and are well insulated, have panel heaters and double-glazing. They are great places to use as a base for exploring the Cornish countryside, enjoy the beautiful beaches, to chill out in the sun or snuggle up inside for a quiet evening.

Large patio doors lead onto a modern decking area where there is further seating for

Gwithian Beach Houses

@ Gwithian Sands, Upton Towans, Gwithian, Hayle, Cornwall

relaxing and eating al fresco in the warmth of the Cornish sun. The decking comes complete with a BBQ, which means you can cook outside whilst watching the children having fun on the sand dunes.

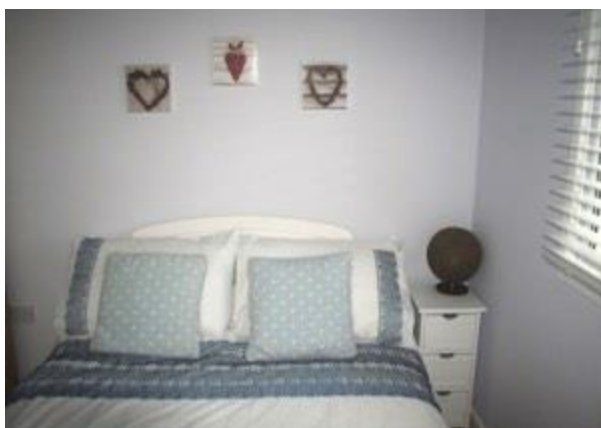
Our chalets are furnished in simple yet modern styles with comfort in mind whilst providing all of the expected modern facilities. The large, comfortable living areas boast a fitted kitchen, dining area and lounge with relaxing sofas, comfy chairs and flat screen TV's with DVD player.

The kitchen/dining areas are fully equipped with everything you need for an enjoyable stay including cooker, fridge/freezer, microwave, kettle, utensils, pots, pans, glasses, mugs etc.

The chalets have two bedrooms. The main bedrooms have double beds and the second bedrooms have either twin beds (in Sunnyside) or bunk beds and a single bed (in Blue Ocean). All bedrooms have extremely comfortable beds, duvets and pillows (please bring you own linen) and have good storage facilities.

Parking is conveniently located immediately adjacent to the chalet. Electricity is via a £1 coin meter. Dogs are welcome (except July & August) for an additional charge.

Sunnyside:



Gwithian Beach Houses

@ Gwithian Sands, Upton Towans, Gwithian, Hayle, Cornwall



Location

The Chalets are located within Gwithian Sands chalet complex. It is very family friendly and welcoming. The facilities on site include laundry facilities, grocery store and cafeteria.



Gwithian Sands is situated on the outskirts of the village of Gwithian, Hayle. It is a small, well-appointed privately owned park, situated behind the extensive sand dunes bordering Gwithian Beach in West Cornwall. Located at the eastern end of St Ives Bay, between Hayle and Godrevy Point, three miles of golden sand beach make this an ideal spot for the family holiday.

Directions

Follow A30 from Exeter. Come off at Hayle B3301 roundabout towards Hayle. Immediately there is a double mini roundabout. Turn right at the second mini roundabout into Loggans Road, signposted "Portreath and Gwithian".

Stay on this road for about 1.5 miles (you will pass St Ives Bay Caravan Park on your left hand side). Turn left into Atlantic Coast Caravan Park after a double 'S' bend. Gwithian Sands is through the Caravan Park to the right. Please follow the one way system.

Gwithian Beach Houses

@ Gwithian Sands, Upton Towans, Gwithian, Hayle, Cornwall

The Beach



A short walk over the sand dunes can reach the beach, or by car to Gwithian Towans.



The beach is excellent for bathing, while younger children can enjoy safe paddling in numerous rock pools. The beach is ideal for windsurfing, kite surfing, surfing and body boarding. There are many local places of interest and the surrounding area is great for rambling.



Gwithian Beach Houses

@ Gwithian Sands, Upton Towans, Gwithian, Hayle, Cornwall

Pricing

March		July	
4 th	£299	1 st	£595
11 th	£299	8 th	£695
18 th	£299	15 th	£825
25 th	£320	22 nd	£915
		29 th	£915
April		August	
1 st	£450	5 th	£915
8 th	£530	12 th	£915
15 th	£450	19 th	£915
22 th	£299	26 th	£915
29 th	£299		
May		September	
6 th	£325	2 nd	£650
13 th	£375	9 th	£450
20 th	£375	16 th	£450
27 th	£640	23 rd	£375
		30 th	£320
June		October	
3 rd	£480	7 th	£320
10 th	£480	14 th	£320
17 th	£500	21 st	£425
24 th	£595		

Gwithian Beach Houses

@ Gwithian Sands, Upton Towans, Gwithian, Hayle, Cornwall

Conditions of Hire

Please read through carefully before signing the booking form. If you have any questions, please call us.

1. The Chalets are our holiday home and we enjoy staying ourselves many times a year, we therefore ask that you treat our home as you would your own.
2. All rules and conditions of Gwithian Sands apply to our holiday home, some of which are included within these Conditions of Hire. Please abide by these during your stay.
3. The person making a Chalet booking must be over 21 years of age and bookings by single sex parties under the age of 30 years will not be accepted.
4. We reserve the right to decline any booking at our discretion or to refuse accommodation to any person we consider unsuitable. We also reserve the right to enter any accommodation in an emergency.
5. Bookings are not transferable and persons other than those stated on the booking form cannot occupy the chalet. Any alteration must be notified to and agreed by us.
6. We are relieved from liability should the accommodation not be available due to circumstances beyond our control, in which case all monies paid would be refunded in full.
7. Failure to take up occupancy of a chalet once a booking has been made and confirmed by us with a deposit received does not relieve the hirer from his/her liability for the full balance of monies due unless prior cancellation has been received by us by telephone and confirmed in writing four weeks prior to your holiday.
8. If your holiday is 2 months or more from date of booking, a deposit of £100 (£200 if your booking is during July and August) is required within 7 days of booking. The balance of your holiday is payable 8 weeks prior to your arrival date and no reminder will be sent. If your booking is made less than 8 weeks before the start of your holiday, the full price of the holiday is payable at the time of booking.
9. You agree on behalf of yourself and your party to show consideration to other guests at all times. Excessive noise, offensive or illegal behaviour will result in you and your party being asked to leave and no refunds will be given. You are not permitted to play any music, radio or television at a noise level that is audible from outside the chalet between the hours of 10pm and 7am.
10. The number in your party cannot exceed the occupancy stated for each Chalet. You agree to keep the accommodation clean and tidy and leave it in a similar condition. We do not require you to pay a security deposit (unless you have dogs) but you are responsible for the cost of any damage or breakages and we reserve the right to recover from you the cost of any damage caused to our property by you or your party. All damage and/or breakages must be reported immediately.
11. The Chalets are available from **2pm** on the arrival date until **10am** on the departure date. You must be out of the property by **10am** in order for us to prepare for the next visitors.
12. The key is located within a key box on each Chalet. We will provide you with the access code nearer the time of your stay.
13. Any Shortcomings in the accommodation must be notified immediately so that we can remedy them. No claim will be considered for any shortcoming not notified during your stay.
14. All vehicles, their contents and your personal possessions are left at your own risk and we are not responsible for any damage or loss. Vehicles must be parked in the designated parking areas.
15. If you wish to bring dogs on your holiday there will be a £30 charge per dog per week, maximum two per chalet, plus additional pet deposit of £50 (made via a cheque), which will only be cashed if there is damage to the chalet. Dogs are not allowed during July and August. Failure to comply with the ruling on dogs will not be tolerated and you may be required to leave if alternative arrangements cannot be made for your dog. No refund will be given.
16. Due to new legislation regarding smoking you are required to refrain from smoking in the chalet.
17. Mattresses, quilts and pillows are supplied. Bed linen, bathroom and beach towels are not supplied.
18. The speed limit on site is 5mph. Please be aware of the one-way system around the park. Quad bikes and motorised scooters are not allowed except those adapted for mobility use.