



Luton Hoo

HOTEL, GOLF & SPA



Luton Hoo Hotel, Golf & Spa – your country retreat in the heart of Bedfordshire. What lies within the 1065 acres is a mystery on entering the gates of the estate. As you drive along the beech tree avenue, watching pheasants and rabbits and perhaps spotting some deer across the fairways to the woodland beyond, the Mansion House emerges through the trees, as ‘Capability’ Brown had intended.

The warmth and sincerity of welcome is as you would expect from good friends.

After settling into your luxurious room and marvelling at the glorious view of landscaped gardens or parkland, take a buggy or walk the estate, fish or boat on the lake, relax in the pool or indulge in a treatment from your therapist. You could play a round of golf or maybe you would rather ease yourself into a cosy chair in the drawing room with a book and afternoon tea, soaking in the serenity of this magnificent Grade I listed mansion. In the evening you can dress up or stay relaxed for dinner, sip cocktails in the Pillared Hall or savour a beer in the Adam’s Bar.

Luton Hoo, one of the country’s finest five star hotels, is a complete destination and yours to experience and enjoy.



LUTON HOO

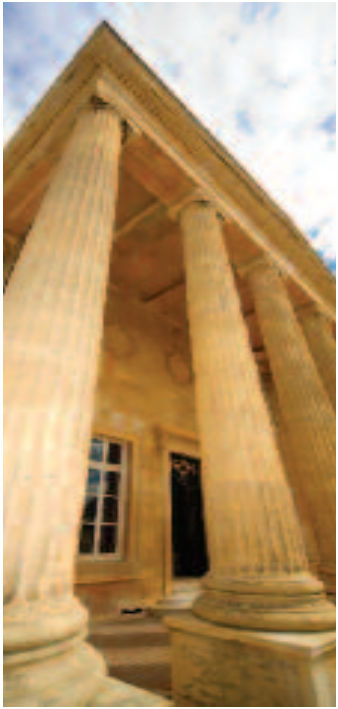


The History of the House and the Grounds



Since the house originates from at least 1601, it is no surprise that Luton Hoo has a colourful and occasionally chequered past – and is directly associated with at least three British monarchs and indirectly linked to three more. The house's east front and many of the rooms can be attributed to society architect Robert Adam, the west front to Sir Robert Smirke, architect of the British Museum and the splendour of many rooms including the State Dining Room and oval staircase to Mewes and Davis, architects of the Ritz.

In the mid 18th century, the famous landscape architect 'Capability' Brown was called upon to modify the estate into flowing parkland, complete with a man-made lake formed by damming the River Lea. Luton Hoo is known to have been the second most expensive scheme of Brown's career.





THE MANSION HOUSE



The 18th Century Grade 1 Listed Hotel



Your reception at Luton Hoo will be welcoming and attentive, but not intrusive.

You are invited into the elegance and grandeur of the Great Hall which epitomises the style of the Mansion House. Great pains have been taken to recreate paintings, sculpture, tapestries and ceramics housed here over the centuries. The spectacular oval staircase hall features a very striking sculpture, originally by Bergonzoli, and art throughout the Pillared Hall and Italianate Drawing Room reflect portraiture by Beechey, Joshua Reynolds and John Singer Sargent.

THE MANSION HOUSE



The 18th Century Grade 1 Listed Hotel



The Pillared Hall is an oasis of calm at any time, but particularly for morning coffee, a light business discussion or before and after dinner drinks to the accompaniment of our delightful pianist.

The 'room with a view' over the south terrace to the formal gardens is the Italianate Drawing Room. At one end you can hold a serious boardroom meeting, enjoy afternoon tea in the sitting room or completely relax for a quiet read surrounded by antique volumes in the Library.

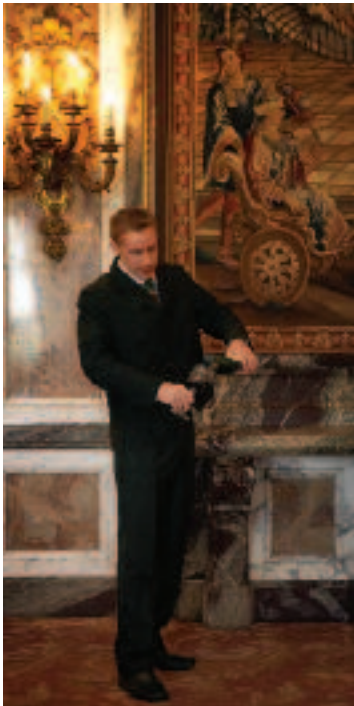




WINING AND DINING



Superb Cuisine – Elegance or Informality



For exquisite fine dining, there can be few more spectacular settings than the Wernher Restaurant, named after one of Luton Hoo's most distinguished former owners, Sir Julius Wernher.

Occupying the sensitively restored original State Dining Rooms and Grinling Gibbons Room, this part of the Mansion House was extensively remodelled in the early 20th century and is considered one of the finest examples of the Beaux Arts style. Its exotic marble panelwork and richly coloured fabrics are reminiscent of the Palace of Versailles.

Already acknowledged as one of the finest in the region, the Wernher Restaurant welcomes food and wine lovers and critics alike.

WINING AND DINING



Superb Cuisine – Elegance or Informality

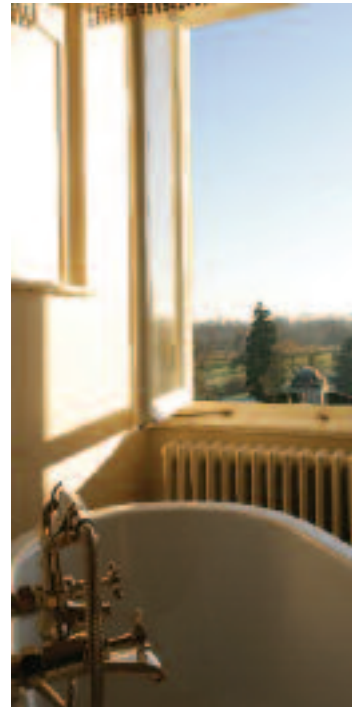


Housed within the historic Stables building, designed by the distinguished 18th century architect Robert Adam, is Adam's Brasserie offering a less formal style of dining, but with no less five star cuisine and service.

The décor is bright and contemporary, its walls lined with stills from many famous films and TV shows, which have been shot on location at Luton Hoo. History relates that visiting royalty including Queen Mary watched films here alongside staff and members of the Wernher family as part of Christmas celebrations at the house.

The adjoining Adam's Bar reflects the equine theme and provides a perfect retreat for pre or after dinner drinks. Light lunches and beverages are served in the 19th Hole throughout the day.





STAYING AT LUTON HOO



In the footsteps of royalty and dignitaries



The Mansion House contains 35 stately and exquisitely decorated rooms and suites, the varying sizes and styles of which mean that no two rooms are alike. With outstanding features including silk lined and panelled walls, marble fireplaces and ornately decorated ceilings, the nine state and principal suites are named after royalty and eminent persons connected with the estate during its lifetime, among them Queen Elizabeth II and Lord Mountbatten.

A landscaped courtyard with covered pergola provides the walkway from the Mansion House to the Parkland Wing, which features 38 air-conditioned bedrooms and suites, including the stunning Roof Garden Suite. Commanding panoramic views east and west across the estate, the beautifully designed roof garden is perfect for summer al fresco dining or a private reception.

STAYING AT LUTON HOO



Five star luxury and amenities



The Robert Adam Wing in the Stables building has 12 bedrooms and suites furnished with the golfer and spa guest in mind. These rooms include two studio suites with four-poster beds, oak beams and vaulted ceilings.

Adjacent to the Spa and pool complex, amid attractive and tranquil surroundings, is the Flower Garden Wing, named after the historic garden once in this area. 59 air-conditioned bedrooms and suites are perfectly located for spa and golfing guests with views either over the golf course or the landscaped gardens.





MEETINGS • BANQUETING • EVENTS



Versatility to meet any requirement



For an off-site meeting where you and your colleagues will have time and space to think...a venue for an all important presentation that will impress your clients and guests...or a location that will comfortably accommodate a conference for up to 120 delegates – it is hard to improve on the meeting facilities at Luton Hoo. With 17 fully equipped suites and syndicate rooms of varying sizes containing the very best facilities, a licence for civil ceremonies and a range of private dining venues, Luton Hoo has the versatility to meet any requirement.

A short distance from the Mansion House is Warren Weir, a completely self-contained function complex, overlooking the River Lea. With meeting rooms, banqueting suites and bedrooms, Warren Weir is capable of hosting over 200 guests for a multi-day event including evening dining.

THE SPA AT LUTON HOO



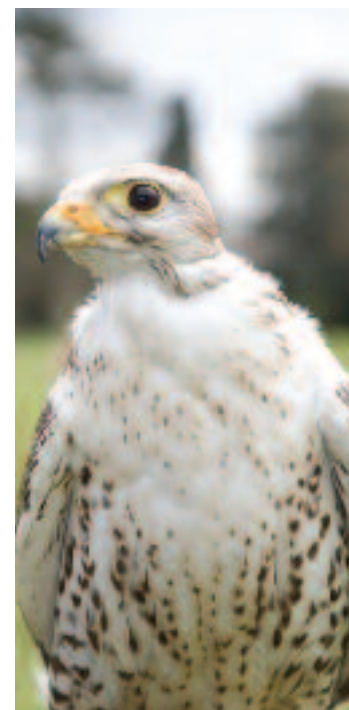
The perfect sanctuary



The Stables building surrounds a central courtyard and incorporates the Bothy, the centre piece of The Spa at Luton Hoo, which features six treatment rooms, a relaxation room, indoor pool and gym, equipped with the latest Technogym and Wellness systems. The Spa provides the perfect sanctuary with a number of relaxing, soothing and calming treatments using specially blended organic products that have taken inspiration from Luton Hoo's historical gardens using geranium, camomile, rosemary and fennel essential oils.

The 18 metre indoor swimming pool is housed in a striking oak framed building with sliding doors opening along one side onto a terraced garden area. There is also an infinity pool, a vitality pool with steam room, sauna, caldarium and experience showers.

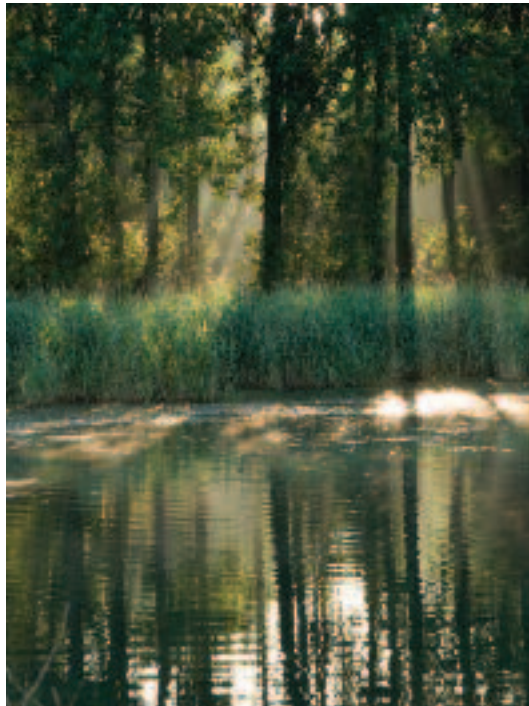




LEISURE AND GOLF



Pleasures and Pastimes



There are so many ways to pass a day's leisure at Luton Hoo – tennis on the restored Victorian grass court, with a pavilion which revolves to follow the day's sun, and two 'all weather' courts in the heart of Flower Garden Wood...the tradition of shooting continues on the estate of both live bird and clay pigeon...and keen anglers will be interested in fishing in the 50-acre lake where carp, pike and perch, among other species, can be found. Boating on the lake, following mapped walks across the estate, riding, jogging, archery and birdwatching are all available.

For golf enthusiasts, the par 73, 7107 yard course is one of the longest 18-hole courses in the UK. There are a series of subtly challenging landscape features including six holes with water obstacles.

Not one tree was removed in the making of the course and in fact 1500 oak, beech and sweet chestnut saplings were transplanted from other areas of the estate.

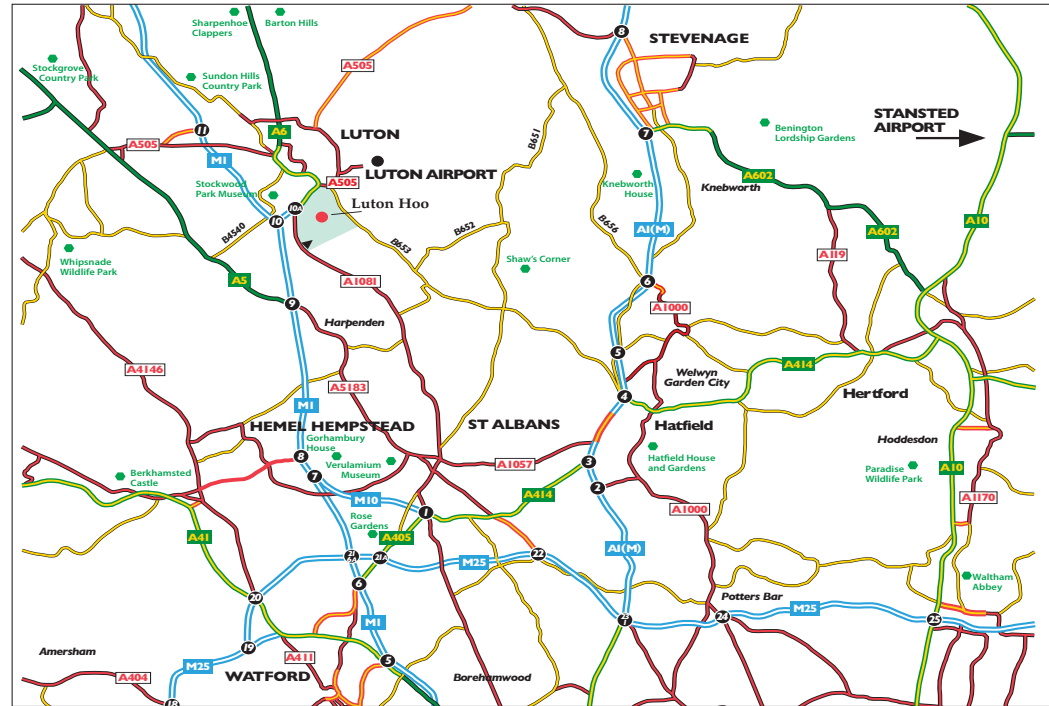


Wildlife and natural beauty abound in the countryside surrounding Luton Hoo – historic houses and gardens, castles, museums, zoos, parks, waterways, walking and cycle routes.

LOCAL ATTRACTIONS	APPROX JOURNEY TIME BY CAR
Stockwood Park Museum	3 mins
Sharpenhoe Clappers	12 mins
Shaw's Corner	20 mins
Wrest Park	18 mins
Stockgrove Country Park	18 mins
Whipsnade	18 mins
Marsworth Canal Walks	26 mins
Sundon Hills Country Park	19 mins
Woburn Safari Park	23 mins
River Great Ouse	30 mins
Langley Park	42 mins
Berkhamsted Castle	30 mins
Knebworth House	25 mins
Hatfield House and Gardens	25 mins
Bernwood Butterfly Trail	45 mins

APPROX JOURNEY
TIME BY CAR

Stockwood Park Museum	3 mins
Sharpenhoe Clappers	12 mins
Shaw's Corner	20 mins
Wrest Park	18 mins
Stockgrove Country Park	18 mins
Whipsnade	18 mins
Marsworth Canal Walks	26 mins
Sundon Hills Country Park	19 mins
Woburn Safari Park	23 mins
River Great Ouse	30 mins
Langley Park	42 mins
Berkhamsted Castle	30 mins
Knebworth House	25 mins
Hatfield House and Gardens	25 mins
Bernwood Butterfly Trail	45 mins



Drive along dual carriageway to Kidney Wood roundabout (Junction 10a of M1).
Take third exit (London Road) A1081 signposted for Harpenden.
Continue along road for approximately 1/2 mile and then turn left into entrance of Luton Hoo Hotel, Golf & Spa.

Luton Airport – 10 minute transfer time	Stansted – 70 minutes
Heathrow Airport – 40 minutes	Gatwick – 90 minutes

Luton Parkway Station is situated a 5 minute taxi ride away and is served by the Thameslink Line, with a frequent 30 minute service into the City of London, from which there is a regular Northern Line underground service to the International Terminal Link – St Pancras serving the Eurostar route.

CAR HIRE:

BY HELICOPTER:
Grid ref: 166 TL 104185

Grid ref: 166 TL 104185

ELITE HOTELS



Elite Hotels of Distinction

www.elitehotels.co.uk



LUTON HOO

The Mansion House, Luton, Bedfordshire LU1 3TQ
Telephone +44 (0)1582 734437
Facsimile +44 (0)1582 485438
E-mail reservations@lutonhoo.com
Website www.lutonhoo.com



TYLNEY HALL

Rotherwick, Hook, Hampshire RG27 9AZ
Telephone +44 (0)1256 764881
Facsimile +44 (0)1256 768141
E-mail reservations@tylneyhall.com
Website www.tylneyhall.com



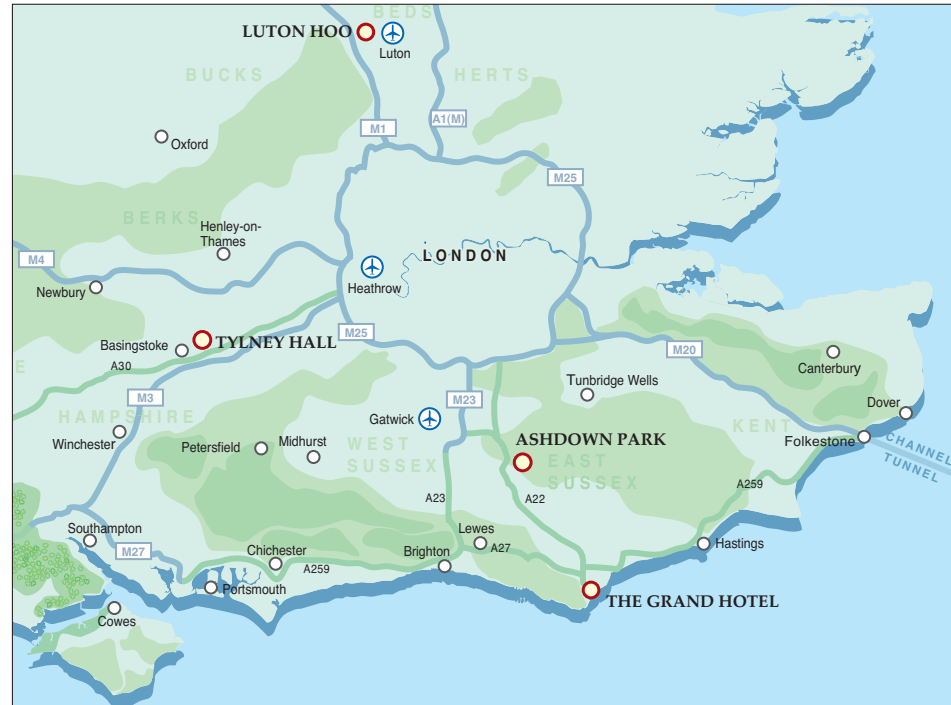
ASHDOWN PARK

Wych Cross, Nr Forest Row, East Sussex RH18 5JR
Telephone +44 (0)1342 824988
Facsimile +44 (0)1342 826206
E-mail reservations@ashdownpark.com
Website www.ashdownpark.com



THE GRAND HOTEL

King Edwards Parade, Eastbourne, East Sussex BN21 4EQ
Telephone +44 (0)1323 412345
Facsimile +44 (0)1323 412233
E-mail reservations@grandeastbourne.com
Website www.grandeastbourne.com



WORLDWIDE RESERVATIONS

Worldwide reservations represented by Small Luxury Hotels of the World.
For reservations call free of charge, when in USA and Canada 800 355 6161
Europe 00 800 525 48000 Hong Kong, Japan 001 800 525 48000
International Airline GDS Access Code LX





Luton Hoo

HOTEL, GOLF & SPA



The Mansion House, Luton Hoo, Luton, Bedfordshire LU1 3TQ
Telephone +44 (0)1582 734437 Facsimile +44 (0)1582 485438
E-mail enquiries@lutonhoo.com Website www.lutonhoo.com



INVESTOR IN PEOPLE